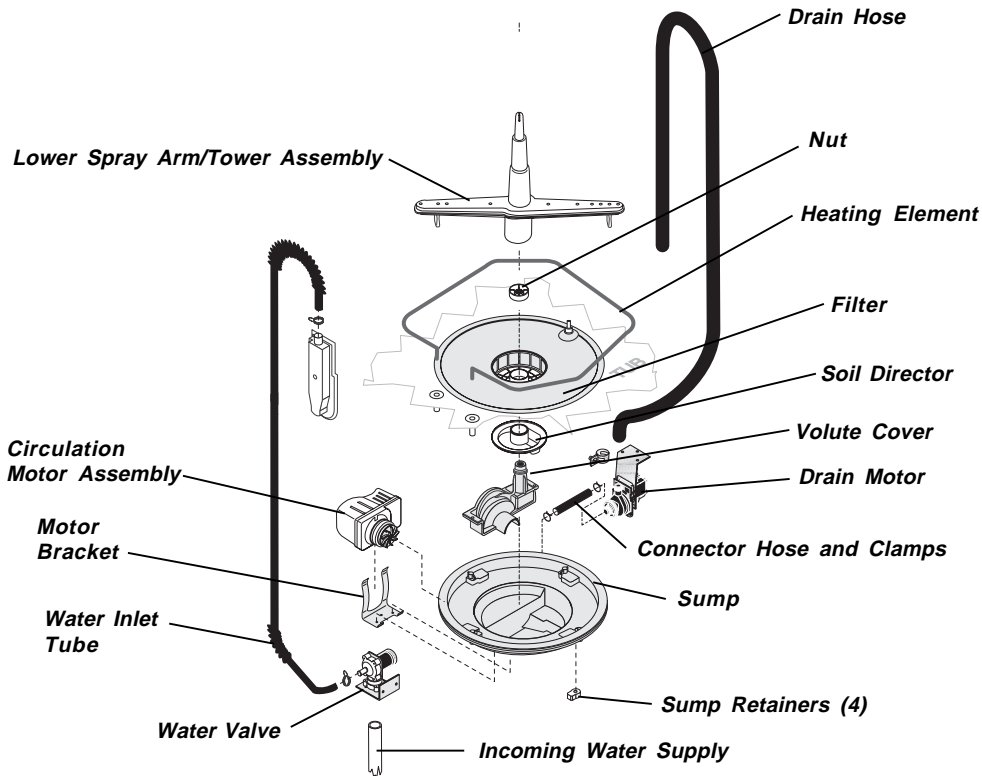


Exploded View of Wash System



Pump Assembly

The pump assembly is driven by a synchronous motor. Rotation is in the counterclockwise direction at 3600 RPM. The motor drives a pump which supplies 100 percent filtered water at a rate of approximately 12 GPM.

Draining is accomplished by using a small separate synchronous drain pump mounted to the side of the sump. The drain pump is connected to the main pump by a small rubber hose. The drain check valve is located at the entrance to the drain pump. The drain hose is attached by a worm gear clamp to the discharge of the drain pump.

700 Watt Heater

Refer to the cycle chart on the reverse side to determine when the heater is on during the wash cycle.

010313 (MECH)

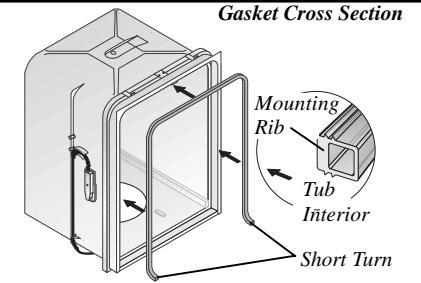
The drain is then routed up the side of the dishwasher and attached to the side of the tub. This drain loop insures that an air pocket cannot form near the drain pump and cause the pump to air lock. The drain loop on the side of the tub must be kept in place after servicing.

The main pump can easily be removed by disconnecting the drain pump connector hose and the wiring harness connections made at the circulation motor and rotating the four sump retainers toward the middle of the sump.

Voltage checks of the heater should be made with the timer set in the main wash.

Tube and Door Seal

The door seal is pressed into the tub channel for an interference fit. Center the gasket (marked on back) at the tub top center and press in place without stretching or bunching. The gasket takes a short turn at the bottom of the tub channel before ending at the channel end wall.



Product Specifications

Electrical	
Rating	120 Volts, 60Hz
Separate Circuit	15 amp min.- 20 amp max.
Motor (Amps)	1.1
Heater Wattage	700
Total Amps (load rated)	10.0

Water Supply

Minimum incoming water temperature	120°F (49°C)
Pressure (PSI) min./max.	20/120
Connection (NPT)	3/8"
Consumption (Normal Cycle)	6.9 gal., 26.1 liters

Trouble Shooting Tips

⚠ WARNING



Electric Shock Hazard

Disconnect electrical power at the fuse box or circuit breaker box before adjusting or replacing components. Failure to follow this warning could result in death or serious injury.

Check the list below each symptom. Repair or replace defective components as encountered.

Symptom. . Dishwasher will not operate when turned on (wait at least 90 seconds).

1. Fuse (blown or tripped).
2. 120 VAC supply wiring connection faulty.
3. Timer (contacts open or defective)
4. Motor (inoperative).
5. Door latch not making contact with door switch.
6. Rocker switch (open contacts).

Symptom. . Motor hums but will not start or run.

1. Motor stuck due to prolonged non-use.

Symptom. . Motor trips out on internal thermal overload protector.

1. Improper voltage.
2. Motor windings shorted.
3. Glass or foreign items in pump.

Symptom. . Dishwasher runs but will not heat.

1. Heater element (open).
2. Timer defective.
3. Wiring or terminal defective.

Symptom. . Dishwasher will not pump out.

1. Drain restricted.
2. Timer contact defective.
3. Defective drain pump.
4. Air lock in drain hose.
5. Make sure hose is attached in proper position on side of tub.
6. Blocked impeller.
7. Open windings.

Symptom. . Dishwasher will not fill with water.

1. Water supply turned off.
2. Defective water inlet fill valve.
3. Check fill valve screen for obstructions.
4. Defective float switch.
5. Timer contact defective.
6. Wiring defective.
7. Float stuck in "UP" position.

Symptom. . Timer does not advance.

1. Timer motor (stalled or open.)
2. Check timer for power to timer motor.
3. Timer shaft binding to or knob interference with escutcheon.

Symptom. . Dishwasher water siphons out.

1. Drain hose (high) loop too low.
2. Drain line connected to a floor drain not vented. (Install air gap at counter top.)
3. Drain hose not connected to side of tub.

SERVICE DATA SHEET

P/N: 154395801

Model: MDB100

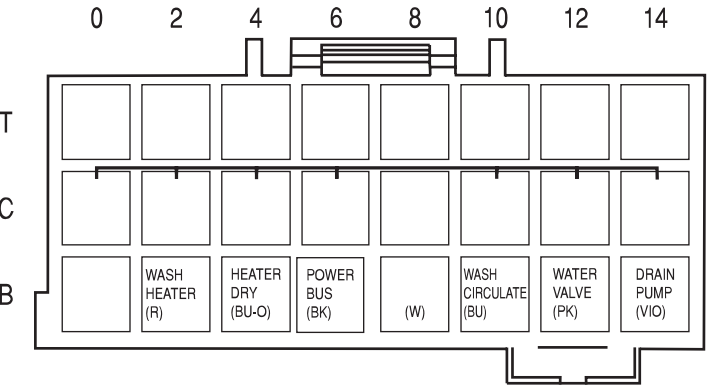
(010302)

This information is intended for use by persons having electrical and mechanical training and a level of knowledge of these subjects generally considered acceptable in the appliance repair trade. Electrolux Home Products North America cannot be responsible, nor assume any liability, for injury or damage of any kind arising from the use of this Service Data Sheet.

Color Code

BK.....Black R.....Red
 BU.....Blue VIO.....Violet
 BU-O.....Blue/Orange W.....White
 PK.....Pink

Timer Block



Cycle Chart

	END	108	90
	108	90	
	106	90	
	105	90	
	103	90	
	103	90	
	102	90	
	102	90	
	101	90	
	100	90	
	98	90	
	96	90	
	94	90	
	92	90	
	90	90	
	88	90	
	86	90	
	86	90	
	85	90	
	85	90	
	83	122	
	81	120	
	79	120	
	79	120	
	77	120	
	77	120	
	76	120	
	75	120	
	73	120	
	71	83	
	69	82	
	67	6	
	65	82	
	63	123	
	61	120	
	59	120	
	58	83	
	56	82	
	55	6	
	55	82	
	53	66	
	51	120	
	49	120	
	47	120	
	46	120	
	44	120	
	43	120	
	41	120	
	39	83	
	37	82	
	35	6	
	33	82	
	31	33	
	29	120	
	27	120	
	25	83	
	24	82	
	22	6	
	21	85	
	19	120	
	18	120	
	16	120	
	15	120	
	13	120	
	12	120	
	10	83	
	9	82	
	7	6	
	6	55	
	4	120	
	3	83	
	1	90	
INTERVAL DURATION SECONDS			
TIME IN MINUTES			
BK 6B POWER BUS TIMER MOTOR			
8B			
W 8B			
BU-O 4B HEATER DRY			
R 2B HEATER WASH			
PK 12B FILL VALVE			
VIO 14B DRAIN MOTOR			
BU 10B WASH MOTOR			
DETENT			
NORMAL WASH OFF			

Wiring Diagram

