

洗衣机安装说明

WASHER INSTALLATION INSTRUCTIONS

目录

洗衣机的安全性	2	安装说明	5
安装要求	2	排放管的连接	6
工具和部件	2	进水管的连接	6
规格	3	洗衣机的校平	7
安装位置要求	3	电源线的连接	8
排水系统	4	完整的安装清单	8
电气要求	4		

Table of Contents

WASHER SAFETY	9	INSTALLATION INSTRUCTIONS	12
INSTALLATION REQUIREMENTS	9	Connect Drain Hose.....	13
Tools and Parts	9	Connect Inlet Hoses.....	13
Specifications	10	Level Washer	15
Location Requirements	10	Power Cord Installation	Back Cover
Drain System	11	Complete Installation Checklist.....	Back Cover
Electrical Requirements	11		

洗衣机的安全性

您和他人的安全至关重要。

我们在本手册中以及在您的洗衣机上提供了许多重要的安全信息。请阅读并遵守所有安全信息。



这是安全警示符号

此符号提醒您警惕可导致您和他人死亡或受伤的潜在危险。

安全警示符号“危险”或“警告”后面跟随所有安全信息。这些安全用语的意义如下：

危险

如果您没有立即遵守安全说明，可导致死亡或严重受伤。

警告

如果您没有遵守安全说明，可导致死亡或严重受伤。

所有安全信息将告诉您潜在的危险是什么，告诉您如何降低受伤机率，并告诉您不遵守这些安全说明所导致的后果。

安全要求

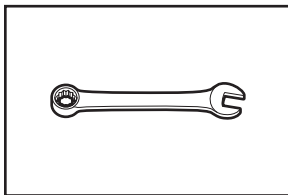
工具和部件：

安装前要准备所需的工具和部件。

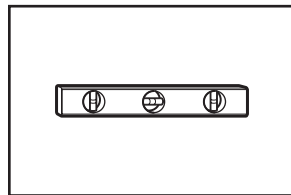
所提供的部件：

注：所有提供的安装部件都放在洗衣机顶部的纸盒子里。

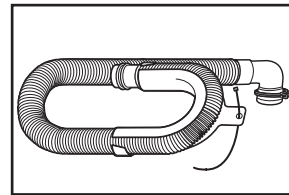
所需的工具：



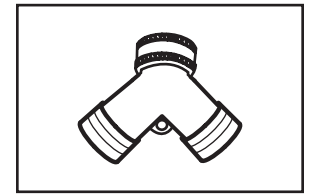
可调或开口扳手
14 mm (9/16")



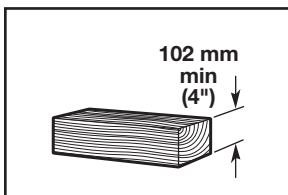
校平仪



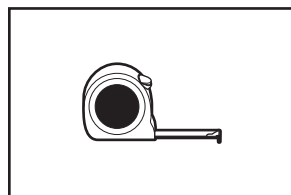
带有管夹、排放管成型件和束线带的排水管



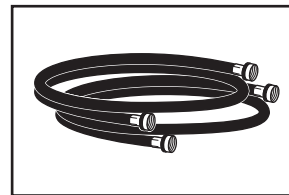
“Y”形接头



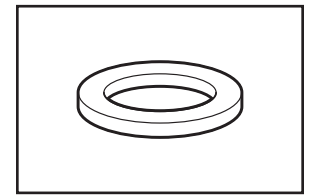
木块



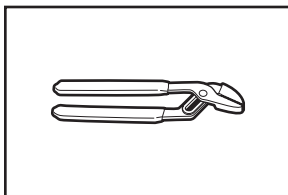
直尺或卷尺



进水管

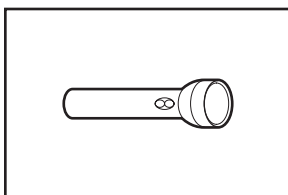


橡胶垫圈

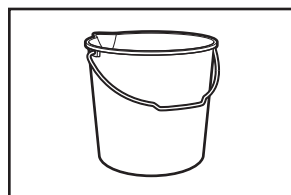


可开口到44.5 mm
(1 3/4")

可选工具：



手电筒



大桶

可替代部件：（不随洗衣机提供）

您安装洗衣机时可能会需要一些额外的部件。采购这些部件时，请联系您的洗衣机销售商或被授权的服务公司。

如果您有：	您需要：
高架下水道	标准的容量为76 L（20加仑）高度为990 mm（39"）的排水管或公共水池、排水泵和连接器（可从当地水管设施供应商处购买）
25 mm（1"）竖管	直径为从51 mm（2"）至25 mm（1"）的竖管接头 产品号3363920 连接器套件零件号285835
排水管太短	加长的排水管零件号285863 连接器套件零件号285835
绒棉漏水塞	漏水保护器零件号367031 连接器套件零件号285835

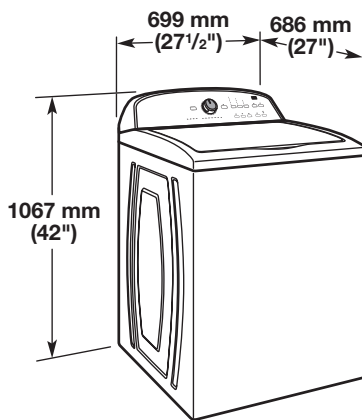
规格

技术规格：
220-240 V ~50 Hz. AC, 1ph 650 Watts

洗衣容量
9.0 kg (19.8 lb)

安装位置要求

为提高洗衣机性能以及减少噪音和可能的“洗衣机走动”，应选择合适的安装位置。可把洗衣机安装在地下室、洗衣房、壁橱或嵌壁式区域内。



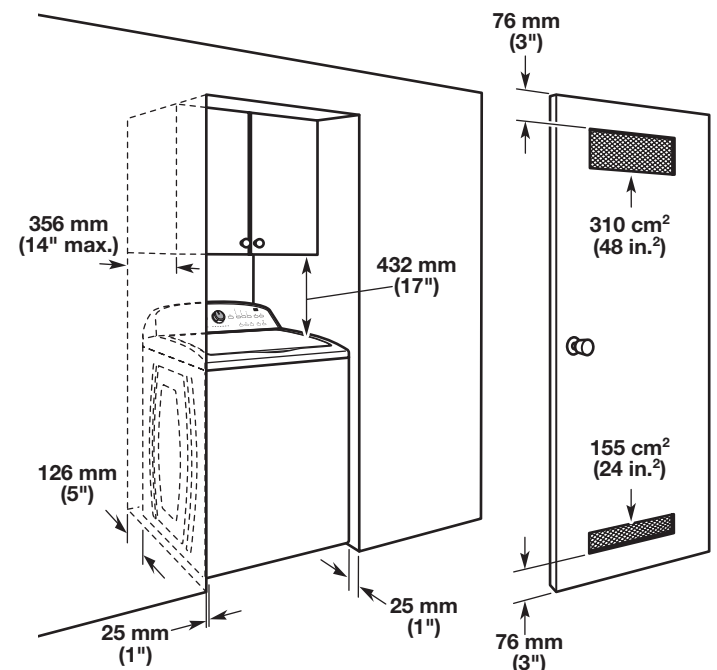
您将需要准备：

- 加热到49°C（120°F）温度下的加热器。
- 必须在洗衣机背面的1.2 m（4英尺）电源线范围内的接地插座。
- 位于0.9 m（3英尺）洗衣机热和冷水进水管范围内的热水和冷水水龙头，以及水压力应为：0.03-0.8MPa。
- 在整个洗衣机放置范围内最大倾斜度不超过25 mm（1"）的地板。不建议安装在地毯上。
- 能够支撑143 kg（315 lbs）重量洗衣机的地板。

重要提示：如果洗衣机敞开口或周围温度低于0°C（32°F）时请不要安装、储存或操作它。在低温下如果洗衣机中留有水的话可能会损坏机器。防冻信息请参考使用和保养指南中的“洗衣机的保养”一节。

您负责正确安装。

嵌壁区域或壁橱内的安装



上图空间尺寸只是为建议尺寸，但图中的壁橱门通风口尺寸为最小尺寸。

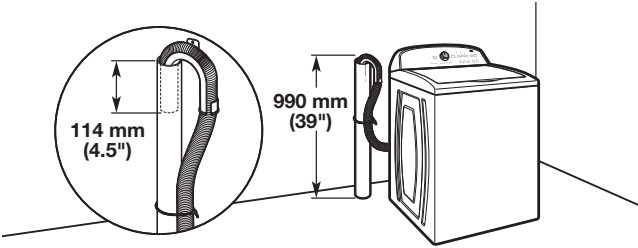
该洗衣机已经通过了与侧壁的间隙为0 mm（0"）的安装测试。为便于安装和维护，应尽可能留有更多的空间，以及还应考虑墙壁、门和地板的附属设备和间隙。洗衣机的所有侧面都应留有25 mm（1"）的空间以减少噪音的传递。如果衣柜门或百叶门的话，在门的顶部和底部应留有通气口。

重要提示：洗衣机底座处的通风口不能被地毯堵塞。

排水系统

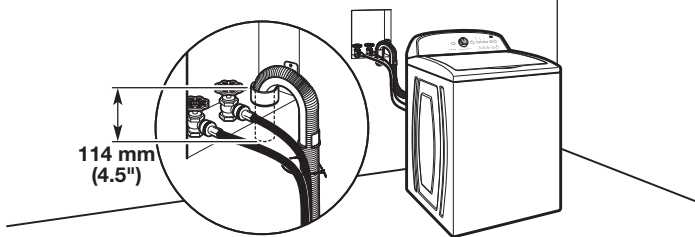
可通过地漏、墙壁竖管、地板竖管或洗衣盆来安装排水系统。可根据实际情况选择适合您的方法。

地板竖管排水系统



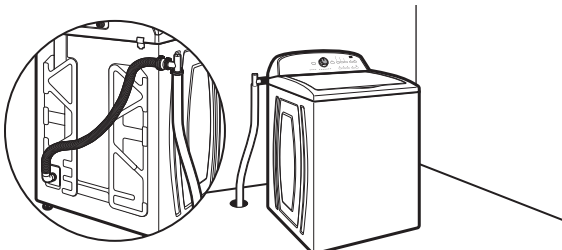
排水竖管的最小直径：51 mm (2")。最小水输送量：每分钟64 L (17加仑)。竖管顶部高度必须至少为990 mm (39")；从洗衣机底部算起的安装高度不能超过1.22 m (48")。如果安装高度不得超过该尺寸的话，则您必须准备一个排水泵系统。

墙壁竖管排水系统



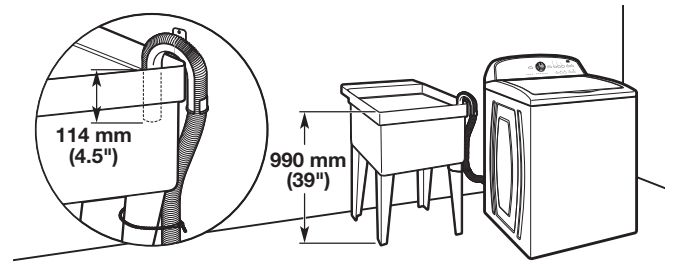
见“墙壁竖管排水系统”。

地板排水系统



地板排水系统需要一个虹吸中断工具包（零件号285834）、2个连接器套件（零件号285385）以及一个可能需要单独采购的加长排水管（零件号285863）。采购时，请联系您购买洗衣机的销售商或授权的服务公司。最短的虹吸中断管长度：从洗衣机底部算起为710 mm (28")。（也可能会需要额外的水管。）

洗衣盆排水系统



最小储水量：76 L (20加仑)。洗衣盆必须高于地板至少990 mm (39")；安装高度不能高于洗衣机底面1.22 m (48")。

重要提示：为避免虹吸现象，排水管进入洗衣盆的深度不能超过114 mm (4.5")或低于冲洗水管的顶部。要用束线带绑好排水管。

电气要求

警告



电击危险

插入到接地3孔插座中。

不要移动接地端。

不要使用转接器。

不要使用过长的电线。

不遵守上述要求可能会导致死亡、火灾或电击事故。

- 需要规格为220-240V、50Hz、AC和10A的熔断电源。建议采用延时保险丝或断路器。建议每种应用要适用专用断路器。
- 该洗衣机应配备带有接地插头的电源线。
- 为减少电击事故，电源线必须接入到匹配的接地插座中，接地应满足当地法规和条例的要求。如果无适配插座的话，客户有责任和义务让合格的电工来安装正确的接地插座。
- 如果需要代码和使用单独接地线的话，建议由合格的电工来确定哪种接地路线最合适。
- 不要接地到气体管道中。
- 如果您不确定洗衣机是否被正确接地，要请有资质的电工进行检查。
- 不要在中线或接地电路中放置保险丝。
- 在安装位置，电源插头必须方便拔下。
- 如果电源线损坏了的话，必须由制造商、服务代理商或同等资格的人进行更换，以避免发生危险。

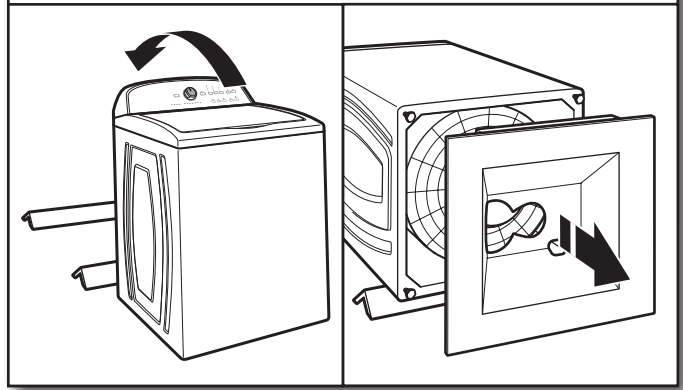
接地说明

该洗衣机必须接地。一旦发生故障或中断现象时，接地线可提供电阻最小的电流通路，以降低电击风险。该洗衣机配备有包含设备接地导线和接地插头的电源线。插头必须插入到合适的插座中，该插座的安装和接地应满足当地法规和条例的要求。

警告：设备接地导线的不正确连接可能会导致电击危险。如果您不确定设备是否被正确接地时要请有资质电工或服务人员进行检查。

不要擅自修改随设备提供的插头 - 如果该插头与插座不匹配的话，要由有资质的电工更换正确的插座。

2. 运输座的拆卸



为避免损坏地板，要把装箱上的底部纸板拿出来放到洗衣机下面的地板上。往后倾斜一下洗衣机然后放到纸板上。取下输送底座。移动时洗衣机保持直立状态。

重要提示：为确保正确运行要拆卸掉运输底座。如果您购买的洗衣机有隔音罩的话，安装时请参阅带有隔音罩洗衣机的说明书。

安装说明

⚠ WARNING

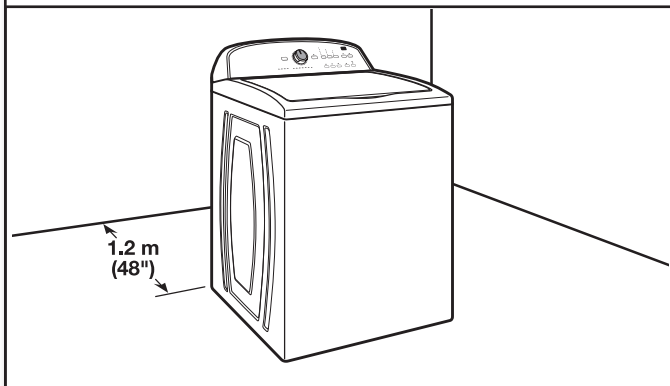
Excessive Weight Hazard

Use two or more people to move and install washer.
Failure to do so can result in back or other injury.

操作前：除去运输材料。

为确保正确操作和必须洗衣机的过多噪音，需要拆除所有的运输材料。

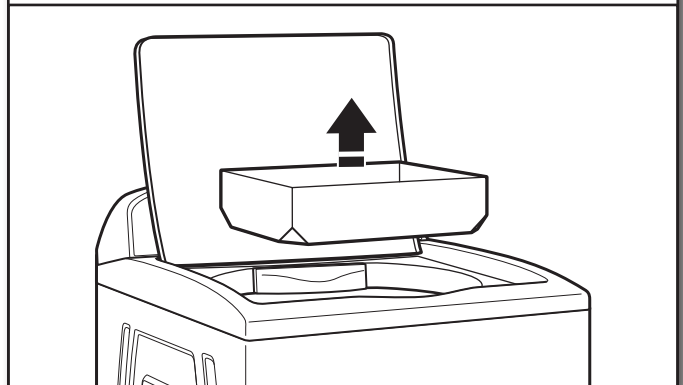
1. 洗衣机的移动



应在其最终放置位置周围1.2 m (4英尺) 范围内移动洗衣机；移动时，洗衣机必须完全处于直立状态。

注：为防止损坏地板，移动前洗衣机应放置在纸板上以及确保洗衣机盖被关闭好。

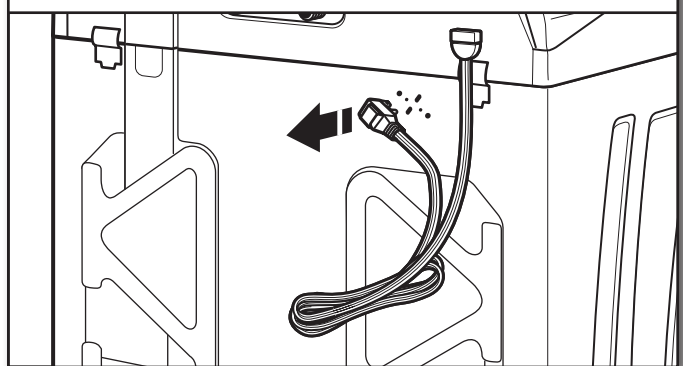
3. 从内筒中取出包装盘



拆卸下洗衣机盖上的带子，打开盖子并把纸板包装盘从内筒中取出来。一定要取出盘中的所有部件。

注：要保留该盘以备以后移动洗衣机。

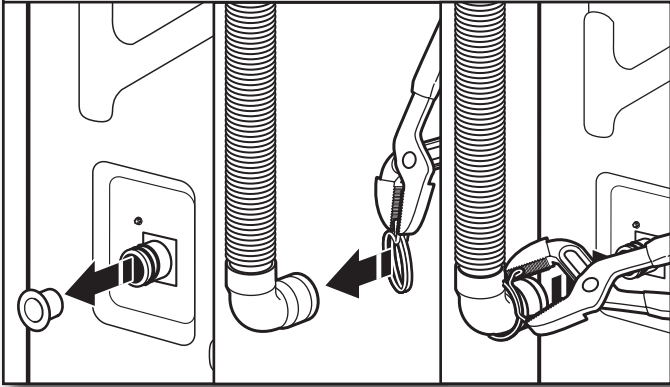
4. 未接好的电源线



抓紧电源插头并把电源线从后板中拉出来。然后把电源线小心地越过控制面板，以允许能自由出入洗衣机的后面。

排水管的连接

5. 排水管连接到排水口上



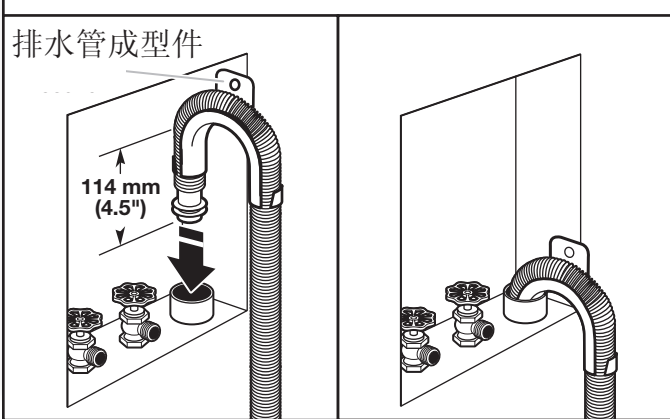
从位于洗衣机背面的黑色排水口中拔出红色塑料插头。

如果管夹未位于排水管弯头处的话，应把它滑到弯曲部处，如图所示。用钳子夹住管夹然后把排水管的黑色弯头滑到黑色排水口处，并用管夹夹紧。

对于洗衣盆或竖管排水系统，请执行第6步。

对于地板排水，应如第7步图中所示先取下预先安装好的排水管。您可能需要在单独方向上安装额外的部件，见“工具和部件”。

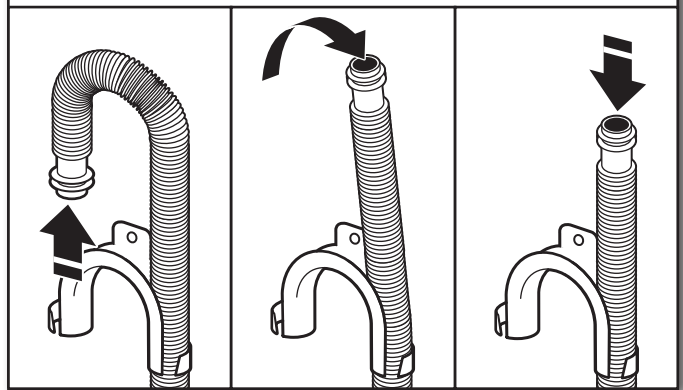
6. 排水管放入到竖管中



把排水管放入到竖管中（如上图所示）或放到洗衣盆一侧。

重要提示：114 mm (4.5") 长的排水管应为内侧竖管；不要把过多的排水管强制放入到竖管中或接触到洗衣盆底部。必须使用排水管成型件。

7. 排水管成型件的拆卸（只适用于地板排水）



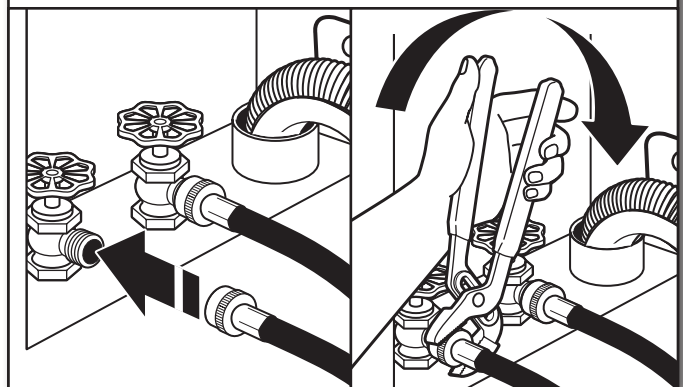
地板排水管安装时，需要把排水管成型件从排水管端拆卸下来。您可能需要其他方向上的额外部件，见“工具和部件”一节。

进水管的连接

洗衣机必须用带有平垫圈（提供）的新进水管连接到水龙头上。不要使用旧的水管。

注：必须连接好两个水管以确保水流入到进水口中。如果只需连接到冷水水龙头的话，则必须使用Y型接头（提供）。

8a. 进水管连接到水龙头上

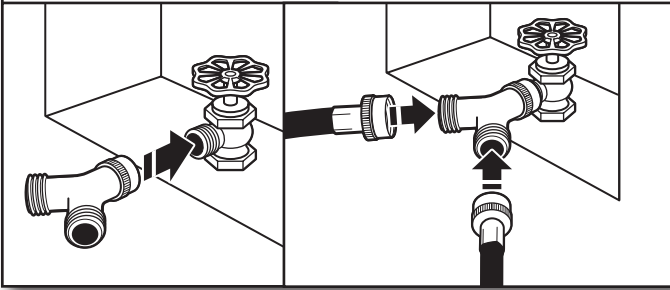


进水管连接到热水水龙头上。用手拧上连接器直到其与洗衣机连接上为止。用钳子再上紧三分之二的连接器。第二个水管连接到冷水水龙头上时重复该步骤。

重要提示：当水管连接水龙头或洗衣机时不要过度拧紧或在水管上使用胶带或密封胶。否则可能损坏它们。

提示信息：要记住那根水管连接到热水水龙头上，可有助于与洗衣机的正确连接。在大多数标准配置中，正确连接时一般都是两个竖管相互交叉的。

8b. 进水管连接到“Y”形接头上



把“Y”形连接器的铜制内螺纹端连接到冷水水龙头上。连接好后再用钳子多拧紧三分之二圈。在长水管的一端有一个位于接头内侧的钢丝过滤网。把该端连接到“Y”形连接器上。把洗衣机冷水进水管连接到该连接器上的另一端。手动拧紧接头直到与连接器连接上为止。然后再通过钳子多拧紧三分之二圈。

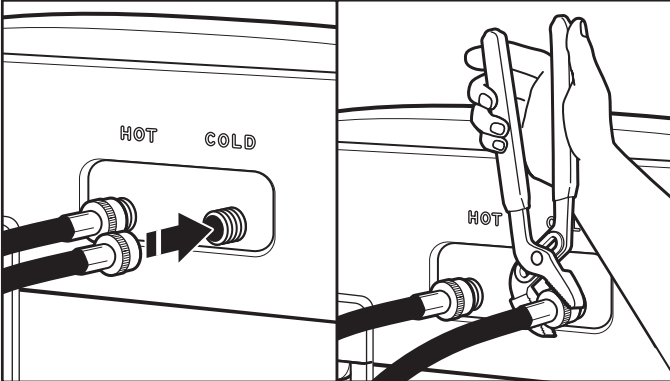
重要：当连接到水龙头或洗衣机时不要过度拧紧或在水管上使用胶带或密封胶。否则可能会损坏水管。

9. 放水



通过水管往洗衣盆、排水管或水桶中放几秒钟的水，以避免堵塞。水应排放到通畅为止。

10. 进水管连接到洗衣机上

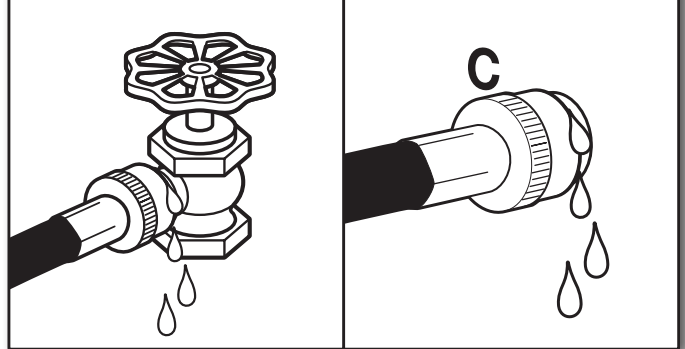


把热水水管连接到标有红圈的热热水进水口上。手动拧紧接头，然后再用钳子再拧紧三分之二圈。同样，对于冷水水管，重复该步骤。

重要提示：为降低水管故障风险，应每5年更换一次水管。应记下水管安装和更换日期以备查。

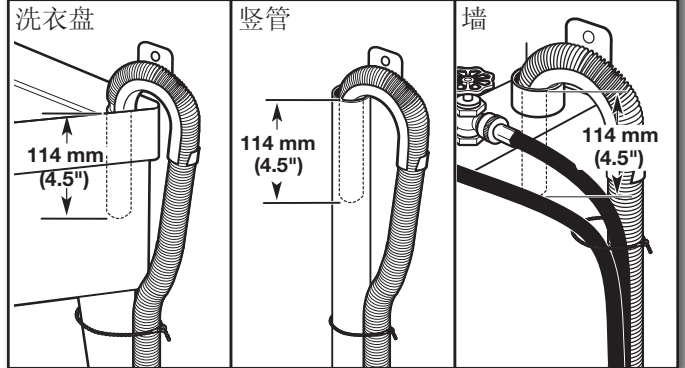
■ 定期检查水管。如果发现凸起、扭曲、切口、磨损或泄漏现象时应进行更换。

11. 泄漏检查



打开水龙头进行水漏检查。进行该检查时可能会有少量水进入到洗衣机中，因此稍后应排掉洗衣机中的水。

12. 固定好排水管

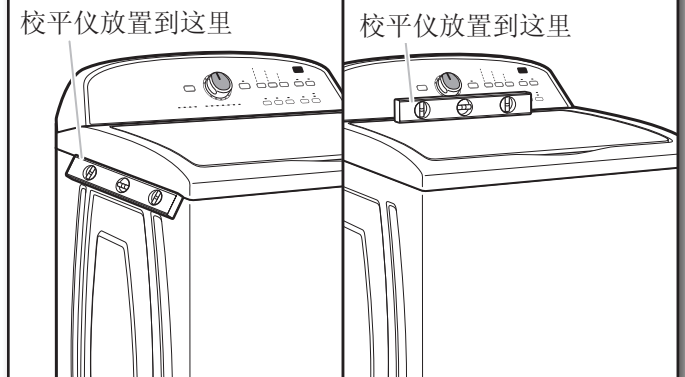


要用扎线带把排水管固定到洗衣盘腿、排水竖管或墙竖管的进水管上。

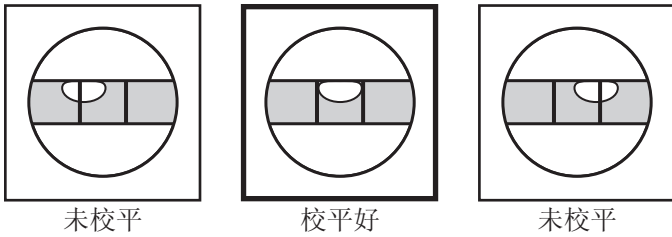
洗衣机的校平

重要提示：正确校平洗衣机可有效降低过多的噪音和振动。

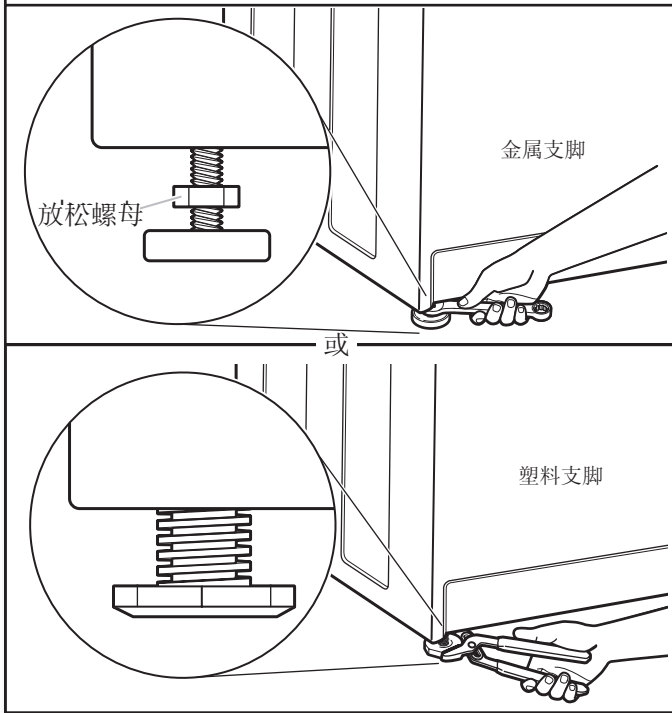
13. 洗衣机水平度的检查



当洗衣机放置到最终位置后，应把校平仪放置到洗衣机的顶部边缘处。利用侧缝检查侧面的水平度。如图所示，检查前盖的水平度。应前后晃动洗衣机以确保四个支脚都紧密接触到地板上。如果洗衣机水平度满足要求的话，应直接跳到第15步（对于金属支脚）或第16步（对于塑料支脚）。



14. 支脚的校平



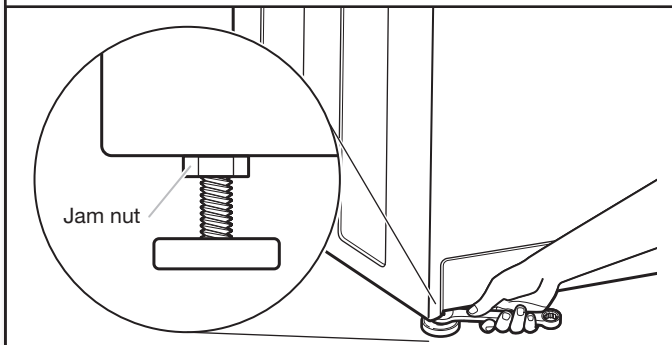
如果洗衣机不水平的话：

对于金属支脚的洗衣机，应用14 mm (9/16") 开口或可调扳手顺时针转动支脚上的放松螺母，直到它们与洗衣机体之间的距离约为13 mm (1/2") 为止。然后顺时针转动支脚以降低洗衣机或逆时针转动以抬高洗衣机。

对于塑料支脚洗衣机，可用可调钳子逆时针转动塑料支脚以降低洗衣机或顺时针转动以抬高洗衣机。对于所有型号的洗衣机，都应重新检查其水平度，必要时重复调整步骤。

有用信息：您可能会想用可支撑整个洗衣机的木块或类似物体把洗衣机垫高约102 mm (4") 的高度。

15. 支撑脚的拧紧



对于金属支脚洗衣机，当其校平好后，应用14 mm (9/16") 开口或可调扳手逆时针拧紧支脚上的放松扳手，使其紧靠洗衣机体。

有用信息：您可能想用木块垫高洗衣机。

电源线的连接

警告



电击危险

插入到接地3孔插座中。

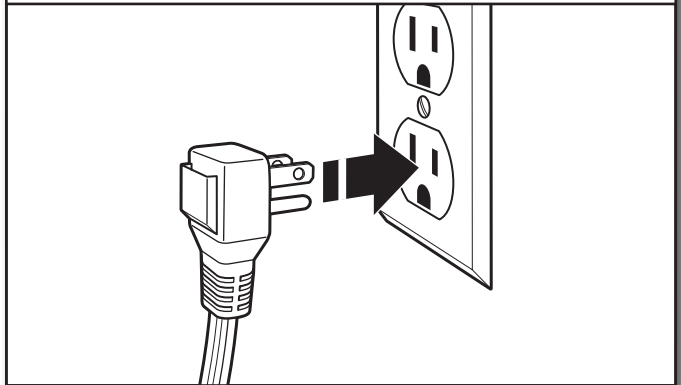
不要移动接地端。

不要使用转接器。

不要使用过长的电线。

不遵守上述要求可能会导致死亡、火灾或电击事故。

16. 插入到接地3孔插座中



完整的安装清单

- 检查电气要求。要确保电源正确以及采用了建议的接地方法。
- 检查所有的部件是否被安装好。如果还有部件忘记安装的话，应查看哪个步骤忘记执行了。
- 检查工具是否齐全。
- 检查所有的黄色运输材料是否已经从洗衣机背面拆除下来。
- 检查水龙头是否被接通。
- 检查水龙头和进水管周围是否泄漏。
- 取下控制面板上的保护膜以及洗衣机上的残留胶带。
- 检查洗衣机插头是否插入到接地插座中。
- 丢弃/重复使用所有的包装材料。
- 阅读洗衣机用户手册中的“洗衣机的使用”一节。
- 测试和清洁洗衣机时，要在洗衣机滚筒或洗涤剂分配器（适用部分机型）中放入粉末状或液体清洁剂1/2正常推荐量。盖上机盖。选择循环次数后然后启动洗衣机，全部循环完成后停止运行。

WASHER SAFETY

Your safety and the safety of others are very important.

We have provided many important safety messages in this manual and on your appliance. Always read and obey all safety messages.



This is the safety alert symbol.

This symbol alerts you to potential hazards that can kill or hurt you and others.

All safety messages will follow the safety alert symbol and either the word "DANGER" or "WARNING."

These words mean:

⚠ DANGER

You can be killed or seriously injured if you don't immediately follow instructions.

⚠ WARNING

You can be killed or seriously injured if you don't follow instructions.

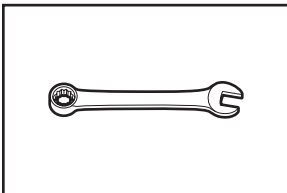
All safety messages will tell you what the potential hazard is, tell you how to reduce the chance of injury, and tell you what can happen if the instructions are not followed.

INSTALLATION REQUIREMENTS

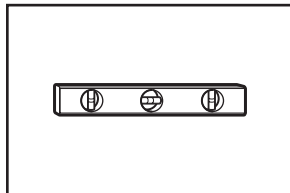
Tools and Parts:

Gather required tools and parts before starting installation.

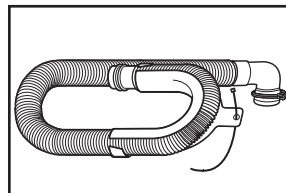
Tools needed:



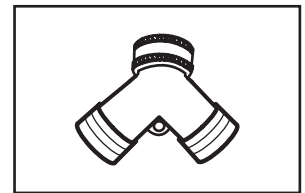
Adjustable or open end wrench 14 mm ($\frac{9}{16}$ ")



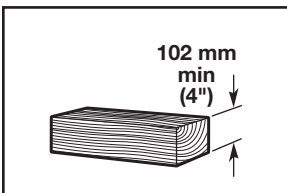
Level



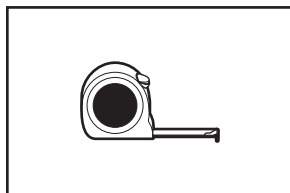
Drain hose with clamp, form, and cable tie



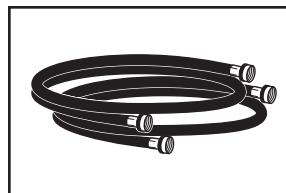
"Y" connector



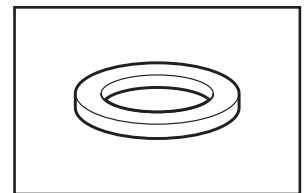
Wood block



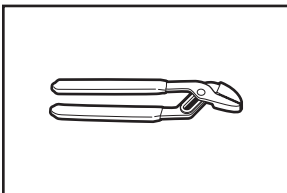
Ruler or measuring tape



Inlet hoses

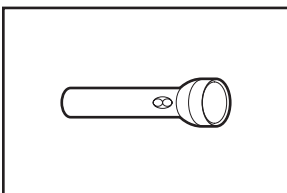


Rubber washer

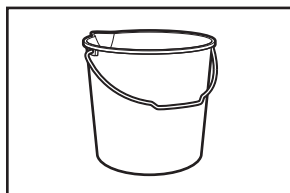


Pliers that open to 44.5 mm ($1\frac{3}{4}$ ")

Optional tools:



Flashlight



Bucket

Parts supplied:

NOTE: All parts supplied for installation are in the cardboard insert in the top of the washer.

Alternate parts: (Not supplied with washer)

Your installation may require additional parts. To order, please contact the dealer from whom you purchased your washer or an authorized service company.

If you have:	You will need:
Overhead sewer	Standard 76 L (20 gal.) 990 mm (39") tall drain tub or utility sink, sump pump and connectors (available from local plumbing suppliers)
25 mm (1") standpipe	51 mm (2") diameter to 25 mm (1") diameter Standpipe Adapter Part Number 3363920 Connector Kit Part Number 285835
Drain hose too short	Extension Drain Hose Part Number 285863 Connector Kit Part Number 285835
Lint clogged drain	Drain Protector Part Number 367031 Connector Kit Part Number 285835

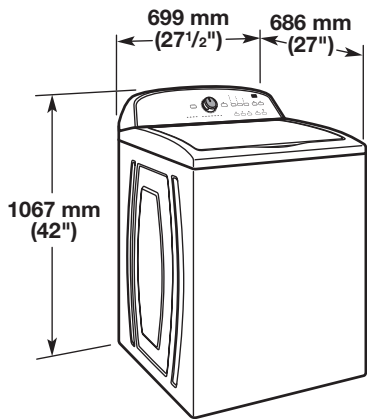
Specifications

Technical Specifications:
220-240 V ~50 Hz. AC, 1ph 650 Watts

Wash Capacity
9.0 kg (19.8 lb)

Location Requirements

Select proper location for your washer to improve performance and minimize noise and possible "washer walk". Install your washer in a basement, laundry room, closet, or recessed area.



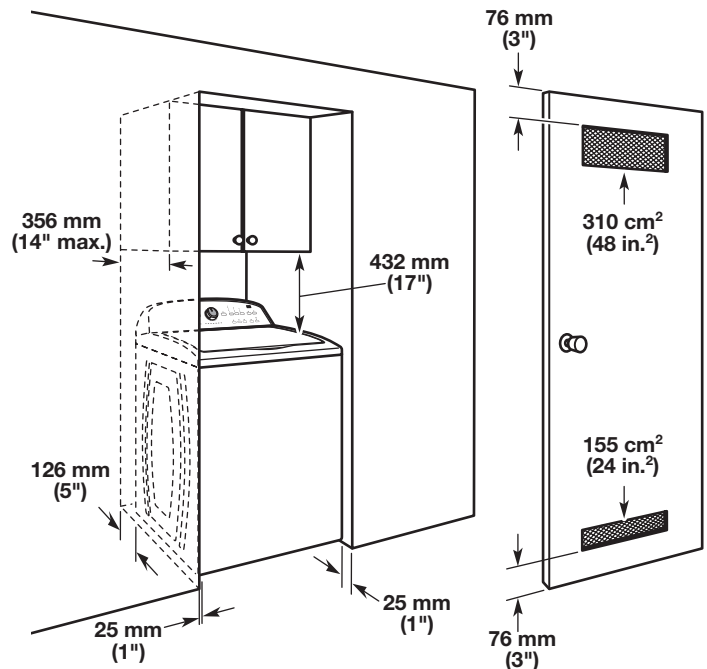
You will need:

- A water heater set to 49° C (120° F).
- An earthed electrical outlet located within 1,2 m (4 ft) of power cord on back of washer.
- Hot and cold water faucets located within 0,9 m (3 ft) of hot and cold water fill valves on washer, and water pressure of 20-100 psi (138-690 kPa).
- A level floor with maximum slope of 25 mm (1") under entire washer. Installing on carpet is not recommended.
- Floor must support washer's total weight (with water and load) of 143 kg (315 lbs).

IMPORTANT: Do not install, store, or operate washer where it will be exposed to weather or in temperatures below 0° C (32° F). Water remaining in washer after use may cause damage in low temperatures. See "Washer Care" in your Use and Care Guide for winterizing information.

Proper installation is your responsibility.

Recessed area or closet installation



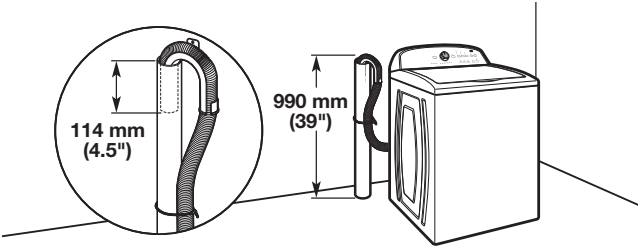
Dimensions show recommended spacing allowed, except for closet door ventilation openings which are minimum required. This washer has been tested for installation with spacing of 0 mm (0") clearance on the sides. Consider allowing more space for ease of installation and servicing, and spacing for companion appliances and clearances for walls, doors, and floor moldings. Add spacing of 25 mm (1") on all sides of washer to reduce noise transfer. If a closet door or louvered door is installed, top and bottom air openings in door are required.

IMPORTANT: Washers that feature ventilation openings in the base of the unit must not be obstructed by carpet.

Drain System

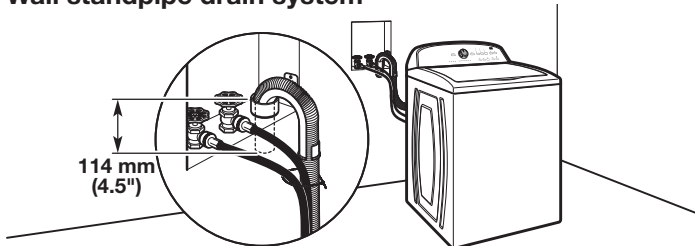
Drain system can be installed using a floor drain, wall standpipe, floor standpipe, or laundry tub. Select method you need.

Floor standpipe drain system



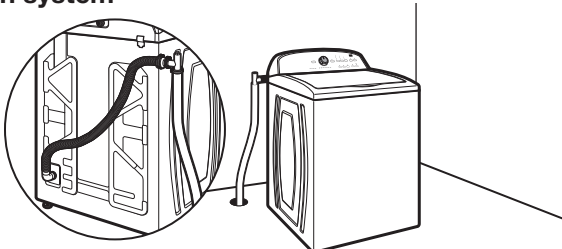
Minimum diameter for a standpipe drain: 51 mm (2"). Minimum carry-away capacity: 64 L (17 gal.) per minute. Top of standpipe must be at least 990 mm (39") high; install no higher than 1.22 m (48") from bottom of washer. If you must install higher than 1.22 m (48"), you will need a sump pump system.

Wall standpipe drain system



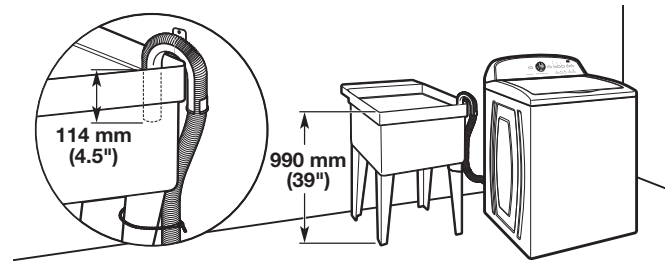
See requirements for "Floor standpipe drain system."

Floor drain system



Floor drain system requires a Siphon Break Kit (Part Number 285834), 2 Connector Kits (Part Number 285385), and an Extension Drain Hose (Part Number 285863) that may be purchased separately. To order, please contact the dealer from whom you purchased your washer or an authorized service company. Minimum siphon break: 710 mm (28") from bottom of washer. (Additional hoses may be needed.)

Laundry tub drain system



Minimum capacity: 76 L (20 gal.) Top of laundry tub must be at least 990 mm (39") above floor; install no higher than 1.22 m (48") from bottom of washer.

IMPORTANT: To avoid siphoning, no more than 114 mm (4.5") of drain hose should be inside standpipe or below the top of wash tub. Secure drain hose with cable tie.

Electrical Requirements

⚠ WARNING



Electrical Shock Hazard

Plug into a grounded 3 prong outlet.

Do not remove ground prong.

Do not use an adapter.

Do not use an extension cord.

Failure to follow these instructions can result in death, fire, or electrical shock.

- A 220-240 volt, 50 Hz., AC only, 10-amp, fused electrical supply is required. A time-delay fuse or circuit breaker is recommended. It is recommended that a separate circuit breaker serving only this appliance be provided.
- This washer is equipped with a power supply cord having an earthing plug.
- To minimize possible shock hazard, the cord must be plugged into a mating, earthing-type outlet, earthed in accordance with local codes and ordinances. If a mating outlet is not available, it is the personal responsibility and obligation of the customer to have the properly earthed outlet installed by a qualified electrician.
- If codes permit and a separate earth wire is used, it is recommended that a qualified electrician determine that the earth path is adequate.
- Do not earth to a gas pipe.
- Check with a qualified electrician if you are not sure the washer is properly earthed.
- Do not have a fuse in the neutral or earth circuit.
- When in the installed position, the mains plug must be accessible for disconnection.
- If the supply cord is damaged, it must be replaced by the manufacturer, its service agent, or similarly qualified persons in order to avoid a hazard.

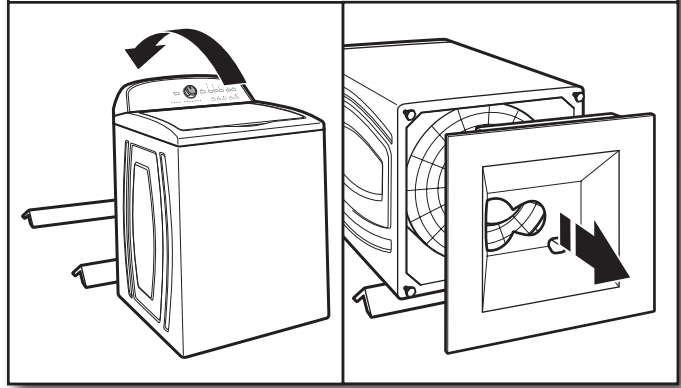
EARTHING INSTRUCTIONS

This washer must be earthed. In the event of a malfunction or breakdown, earthing will reduce the risk of electric shock by providing a path of least resistance for electric current. This washer is equipped with a cord having an equipment-earthing conductor and an earthing plug. The plug must be plugged into an appropriate outlet that is properly installed and earthed in accordance with all local codes and ordinances.

WARNING: Improper connection of the equipment-earthing conductor can result in a risk of electric shock. Check with a qualified electrician or serviceman if you are in doubt as to whether the appliance is properly earthed.

Do not modify the plug provided with the appliance – if it will not fit the outlet, have a proper outlet installed by a qualified electrician.

2. Remove shipping base



To avoid damaging floor, place cardboard supports from shipping carton on floor behind washer. Tip washer back and place on cardboard supports. Remove shipping base. Set washer upright.

IMPORTANT: Removing shipping base is necessary for proper operation. If your washer includes a sound shield, please refer to the instructions included with the sound shield to install it at this time.

INSTALLATION INSTRUCTIONS

⚠ WARNING

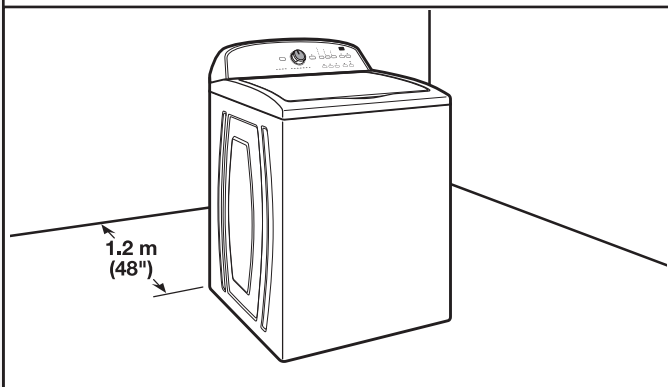
Excessive Weight Hazard

Use two or more people to move and install washer.
Failure to do so can result in back or other injury.

Before you start: remove shipping materials

It is necessary to remove all shipping materials for proper operation and to avoid excessive noise from washer.

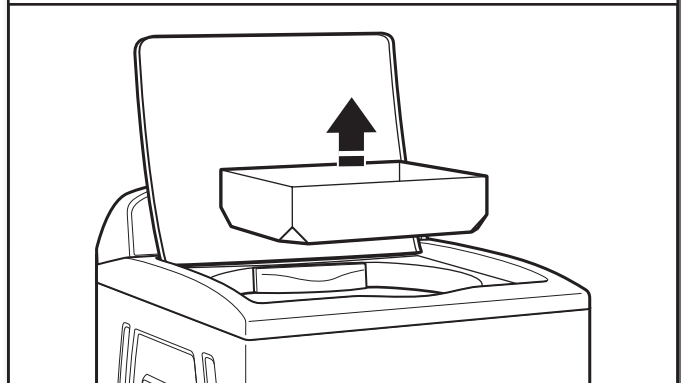
1. Move washer



Move washer to within 1.2 m (4 ft) of its final location; it must be in a fully upright position.

NOTE: To avoid floor damage, set washer onto cardboard before moving it and make sure lid is taped shut.

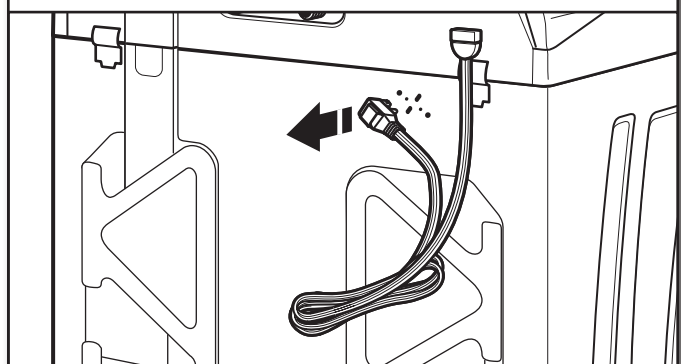
3. Remove packing tray from tub



Remove tape from washer lid, open lid and remove cardboard packing tray from tub. Be sure to remove all parts from tray.

NOTE: Keep tray in case you need to move washer later.

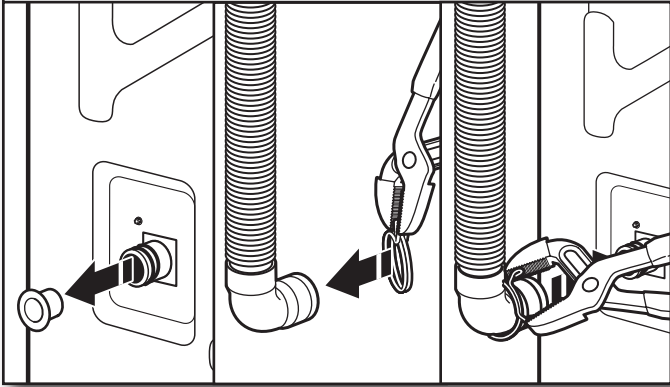
4. Free power cord



Firmly grasp power cord plug and pull to free from rear panel. Gently place power cord over console to allow free access to back of washer.

Connect Drain Hose

5. Attach drain hose to drain port



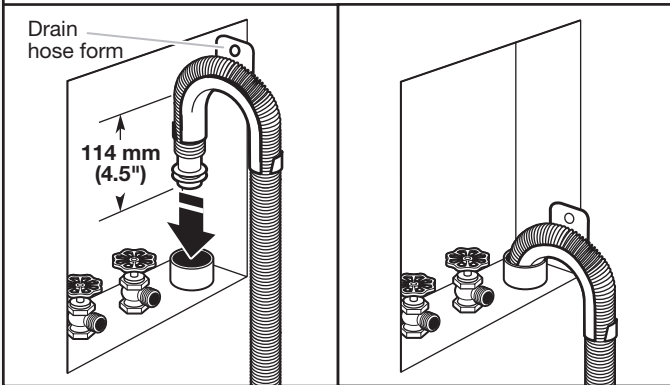
Remove the red plastic plug from the black drain port on the back of the washer.

If clamp is not already in place on elbow end of drain hose, slide it over end as shown. Squeeze clamp with pliers and slide black elbow end of drain hose onto black drain port and secure with clamp.

For a laundry tub or standpipe drain, go to step 6.

For a floor drain, remove the preinstalled drain hose form as shown in Step 7. You may need additional parts with separate directions. See "Tools and Parts".

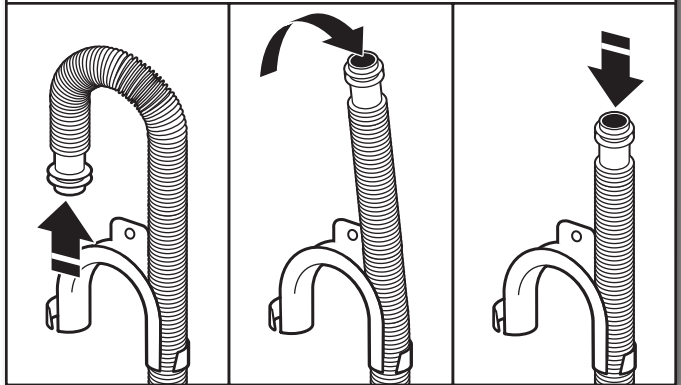
6. Place drain hose in standpipe



Place hose into standpipe (shown in picture) or over side of laundry tub.

IMPORTANT: 114 mm (4.5") of drain hose should be inside standpipe; do not force excess hose into standpipe or lay on bottom of laundry tub. Drain hose form must be used.

7. Remove drain hose form (floor drain installations only)



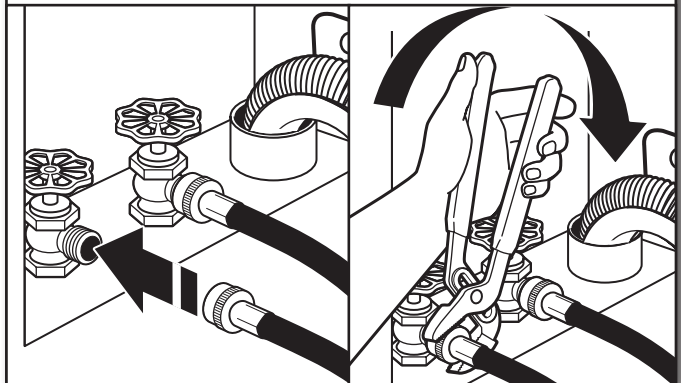
For floor drain installations, you will need to remove the drain hose form from the end of the drain hose. You may need additional parts with separate directions. See "Tools and Parts".

Connect Inlet Hoses

Washer must be connected to water faucets with new inlet hoses with flat washers (provided). Do not use old hoses.

NOTE: Both hoses must be attached and have water flowing to inlet valves. If you are only connecting to a cold water faucet, you must use a Y-adapter (provided).

8a. Connect inlet hoses to water faucets

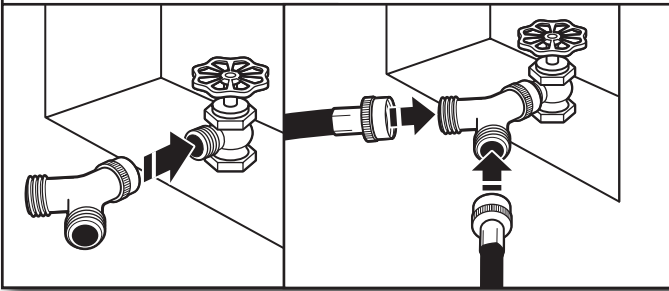


Attach hose to hot water faucet. Screw on coupling by hand until it is seated on washer. Use pliers to tighten couplings an additional two-thirds turn. Repeat this step with second hose for cold water faucet.

IMPORTANT: Do not overtighten or use tape or sealants on valve when attaching to faucets or washer. Damage can result.

HELPFUL HINT: Make note of which hose is connected to hot water to help in attaching hoses to washer correctly. In most standard configurations, hoses will cross over each other when attached correctly.

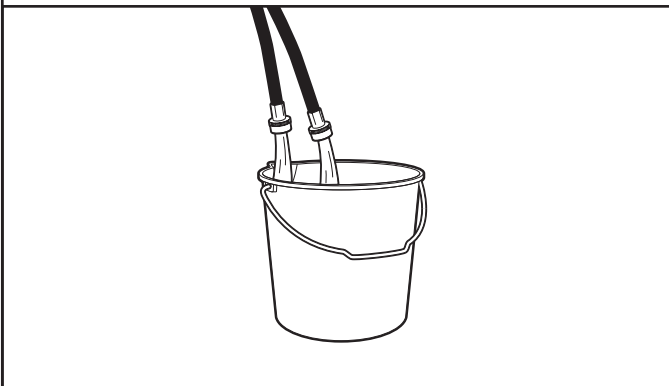
8b. Connect inlet hoses to “Y” connector



Attach the brass female end of the “Y” connector to the cold water faucet. Use pliers to tighten couplings an additional two-thirds turn. One end of the long hose has a wire mesh strainer inside the coupling. Attach this end to the “Y” connector. Attach washer cold inlet hose to other side of “Y” connector. Screw on coupling by hand until it is seated on connector. Using pliers, tighten the couplings an additional two-thirds turn.

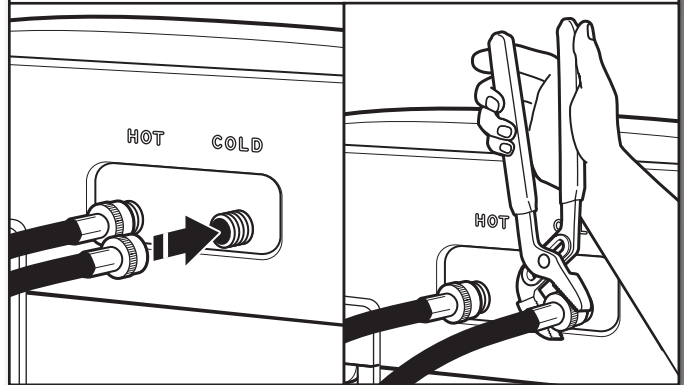
IMPORTANT: Do not overtighten or use tape or sealants on valve when attaching to faucets or washer. Damage can result.

9. Clear water lines



Run water for a few seconds through hoses into a laundry tub, drainpipe, or bucket to prevent clogs. Water should run until clear.

10. Connect inlet hoses to washer

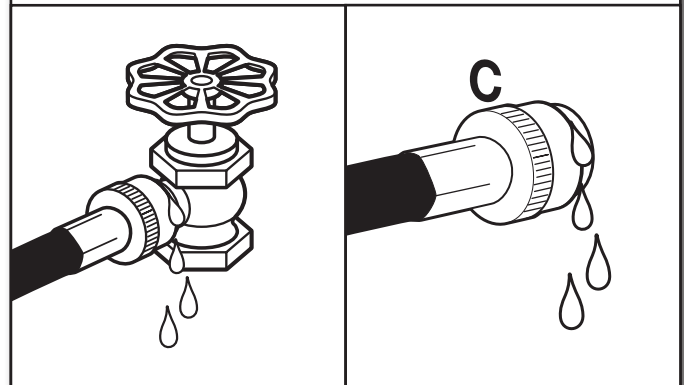


Attach hot water hose to hot water inlet valve marked with a red ring. Screw coupling by hand until it is snug. Use pliers to tighten couplings an additional two-thirds turn. Repeat with cold water inlet valve.

IMPORTANT: To reduce risk of hose failure, replace the hoses every 5 years. Record hose installation or replacement dates for future reference.

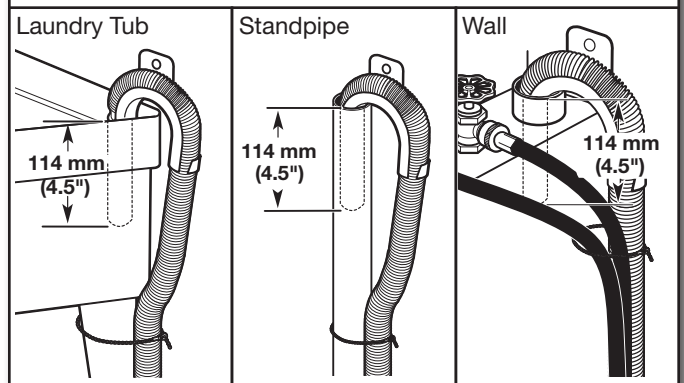
- Periodically inspect and replace hoses if bulges, kinks, cuts, wear, or leaks are found.

11. Check for leaks



Turn on water faucets to check for leaks. A small amount of water may enter washer. It will drain later.

12. Secure drain hose

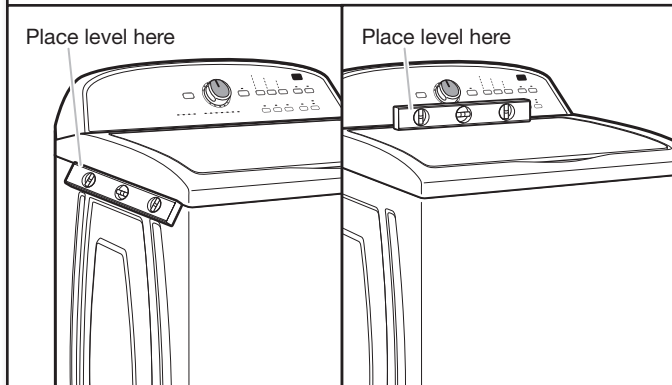


Secure drain hose to laundry tub leg, drain standpipe, or inlet hoses for wall standpipe with cable tie.

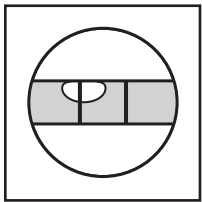
Level Washer

IMPORTANT: Level washer properly to reduce excess noise and vibration.

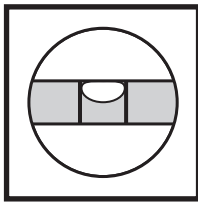
13. Check levelness of washer



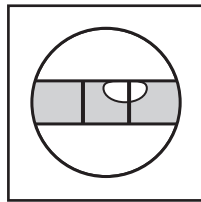
With washer in its final location, place a level on top edges of washer. Use side seam as a guide to check levelness of sides. Check levelness of front using lid, as shown. Rock washer back and forth to make sure all four feet make solid contact with floor. If washer is level, skip to step 15, (on models with metal feet) or step 16 (on models with plastic feet).



Not Level

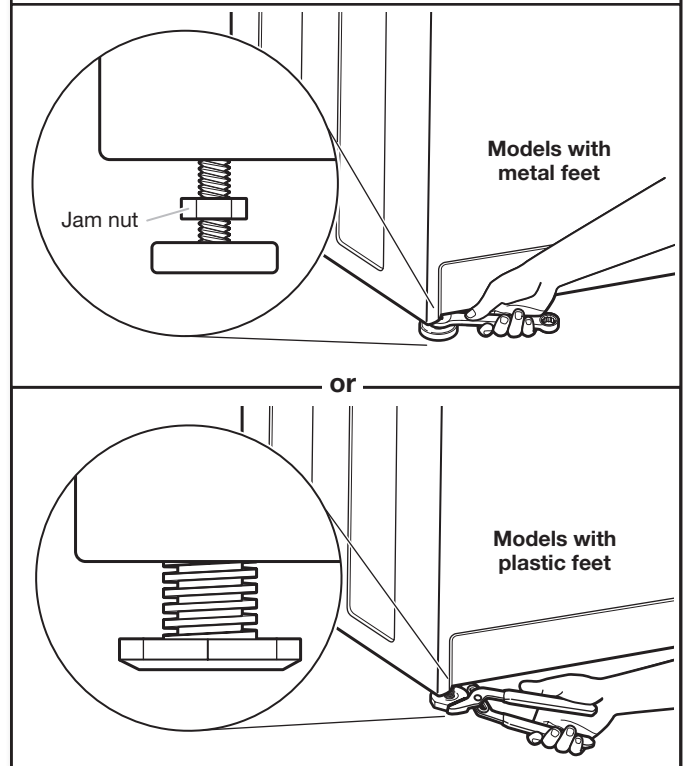


LEVEL



Not Level

14. Adjust leveling feet



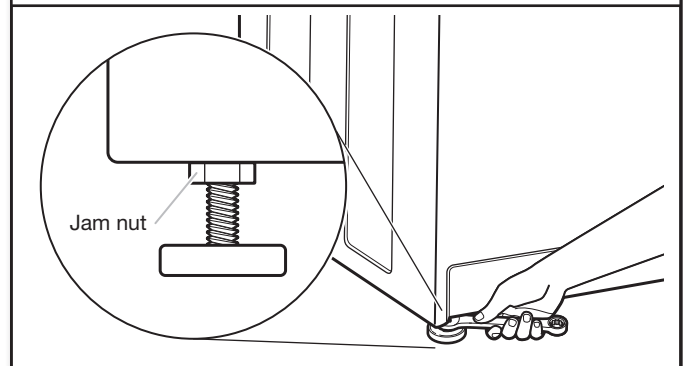
If washer is not level:

On models with metal feet, use a 14 mm (9/16") open-end or adjustable wrench to turn jam nuts clockwise on feet until they are about 13 mm (1/2") from the washer cabinet. Then turn the leveling foot clockwise to lower the washer or counterclockwise to raise the washer.

On models with plastic feet, use adjustable pliers to turn the plastic leveling foot counterclockwise to lower the washer or clockwise to raise the washer. On all models, recheck levelness of washer and repeat as needed.

HELPFUL TIP: You may want to prop up front of washer about 102 mm (4") with a wood block or similar object that will support weight of washer.

15. Tighten leveling feet



On models with metal feet, when washer is level, use a 14 mm (9/16") open-end or adjustable wrench to turn jam nuts counterclockwise on leveling feet tightly against washer cabinet.

HELPFUL TIP: You may want to prop washer with wooden block.

Power Cord Installation

⚠ WARNING



Electrical Shock Hazard

Plug into a grounded 3 prong outlet.

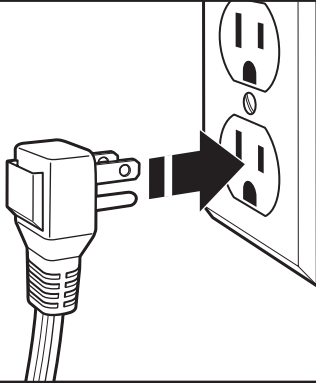
Do not remove ground prong.

Do not use an adapter.

Do not use an extension cord.

Failure to follow these instructions can result in death, fire, or electrical shock.

16. Plug into a grounded 3 prong outlet



Complete Installation Checklist

- Check electrical requirements. Be sure you have correct electrical supply and recommended earthing method.
- Check that all parts are now installed. If there is an extra part, go back through steps to see what was skipped.
- Check that you have all of your tools.
- Check that yellow shipping materials were completely removed from back of washer.
- Check that water faucets are on.
- Check for leaks around faucets and inlet hoses.
- Remove protective film from console and any tape remaining on washer.
- Check that washer is plugged into an earthed outlet.
- Dispose of/recycle all packaging materials.
- Read "Washer Use" in your Washer User Instructions.
- To test and clean your washer, measure 1/2 of normal recommended amount of powdered or liquid detergent and pour it into washer basket or detergent dispenser (on some models). Close lid. Select any cycle. Start washer and allow to complete full cycle.