

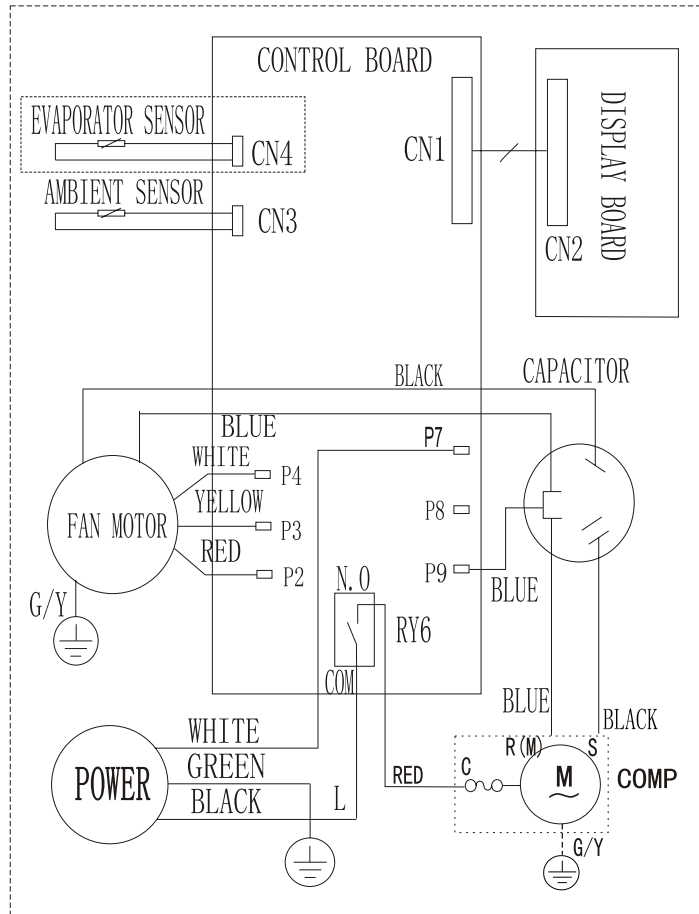
**THIS INFORMATION IS DESIGNED TO ASSIST QUALIFIED REPAIR PERSONNEL ONLY. UNTRAINED PERSONS SHOULD NOT ATTEMPT TO MAKE REPAIRS DUE TO THE POSSIBILITY OF ELECTRICAL SHOCK.**

# TECH SHEET

## PART NO.5304493318

### WARNING

DISCONNECT FROM ELECTRICAL SUPPLY BEFORE SERVICING



#### NOTE:

For compressor terminal arrangement, refer to compressor terminal cover.

Refer to Nameplate For:  
Voltage, Amps and Refrigerant Charge.

Locked Rotor Amps 50.5

#### FUNCTIONAL PARTS

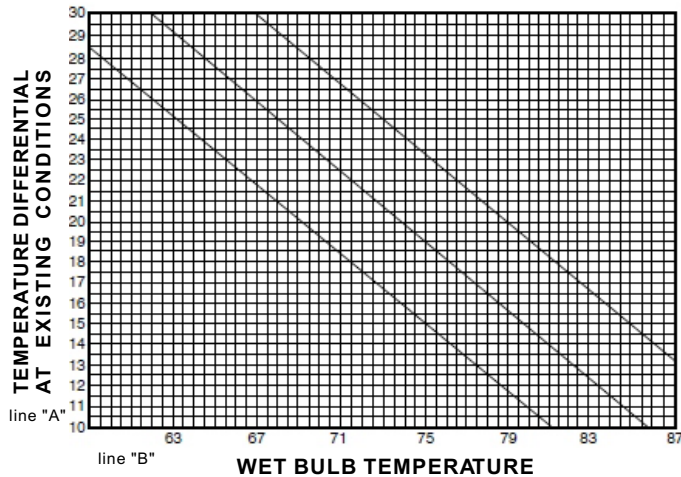
NAME	PART NO.
Compressor	5304476613
Capacitor	5304471300 (60+15uF/250VAC)
Fan Motor	5304493236
Turbo Fan	5304485443
Fan	5304476059
Room Thermistor	5304476053
Overload Protector	5304476612

**NOTICE: PLEASE RETURN THIS SHEET TO ITS ORIGINAL LOCATION**

## TO USE THE PERFORMANCE CHART

1. Record inlet and outlet air dry bulb temperature.
2. Subtract outlet temperature from inlet temperature.
3. Record inlet air wet bulb temperature.
4. Locate wet bulb temperature on line "B".
5. Extend point on line "B" up to sloped performance line on chart; then over to the L.H. column. (line "A")
6. Actual temperature differential should not be more than  $\pm 3^\circ$  from this reading.

## PERFORMANCE CHART



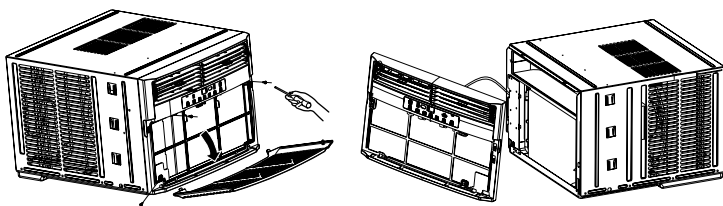
## COMPENSATION CHART

If Outside Ambient Air Temp. is;	Correct Performance Line by:	Wattage
80	Adding $1\frac{1}{2}^\circ$	820
85	Adding $1^\circ$	
90	Adding $\frac{1}{2}^\circ$	
95	No Correction	925
100	Deducting $\frac{1}{2}^\circ$	
105	Deducting $1^\circ$	1160
110	Deducting $1\frac{1}{2}^\circ$	

## TO DISASSEMBLE MECHANICAL PARTS

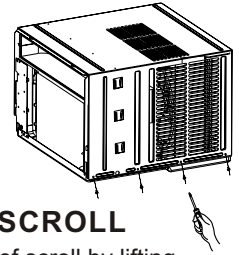
### FRONT GRILLE

1. Unplug the unit from the source of power.
2. Open the front grille and remove.
3. Remove the screws securing the front frame.
4. Depress the cabinet sides to release the side frame locking tabs.
5. Lift front frame slightly to unlock top tabs and rotate frame to the left.
6. Remove the screws that fasten the control box cover, and then remove the control box cover.
7. Disconnect the electronics plug.
8. Remove the front frame.



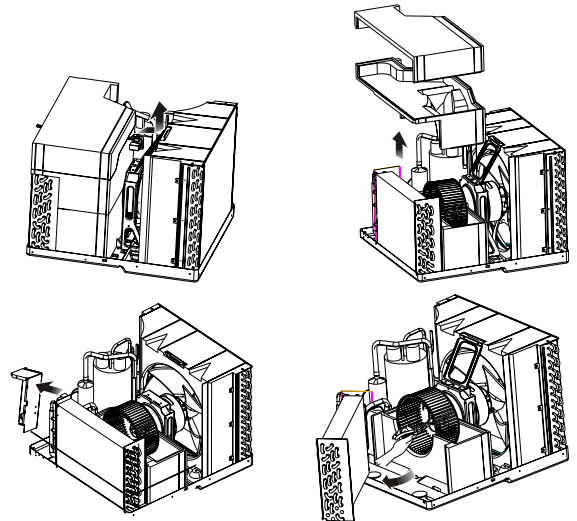
## CABINET

1. Remove the screws that secure the refrigeration unit to the cabinet.
2. Pull the unit out of the cabinet.



## EVAPORATOR FAN AND SCROLL

1. Pull the Fresh Air Gate from rear of scroll by lifting upward as it is pulled out.
2. Lift the upper scroll air duct, and then remove it.
3. Lift the middle scroll air duct, and then remove it.
4. Disconnect intake thermistor from its holder, and then disconnect the compressor and fan motor wires in the control box.
5. Remove the screws that fasten the power cord.
6. Remove the screw that fasten the control box, and then move the control box to the side of the unit.
7. Remove the screws that fasten the evaporator.
8. Gently lift and rotate evaporator forward exposing the turbo fan.
9. Remove the rear scroll air duct.
10. Remove turbofan lock nut using socket wrench, and then remove the turbo fan.



## CONDENSER FAN AND SHROUD

1. Remove the 2 screws which secure the upper motor bracket to the rear shroud. These screws are under the foam seal.
2. Remove the screws which fasten the assembly of condenser and rear shroud to the base, and move the assembly slightly.
3. Remove the screws which secure the condenser to the rear shroud.
4. Gentle lift and rotate the condenser forward.
5. Remove the condenser fan lock nut using a socket wrench, and then remove the condenser fan.
6. Remove the rear shroud.

