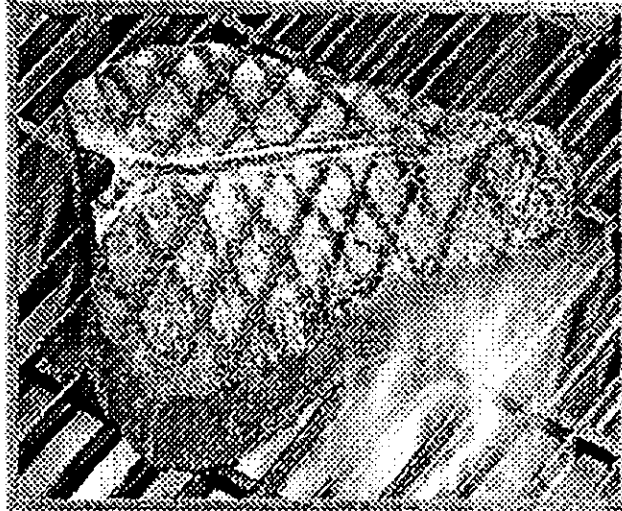


NOTHING
SHOULD COME BETWEEN
A MAN
AND HIS FLAME.



463645004 / D-4165358 (10-01-03)

QUICKSET®

463645004
ASSEMBLY MANUAL



**THIS GRILL IS FOR
OUTDOOR USE ONLY**

CAUTION: Read and follow all safety statements, assembly instructions, and use and care directions before attempting to assemble and cook.

INSTALLER/ASSEMBLER: Leave these instructions with consumer.

CONSUMER: Keep this manual for future reference.

▲ WARNING

Failure to follow all manufacturer's instructions could result in serious personal injury and/or property damage.

▲ CAUTION

Some parts may contain sharp edges -- especially as noted in the manual! Wear protective gloves if necessary.

If you have any questions or need assistance during assembly, please call 1-800-241-7548.

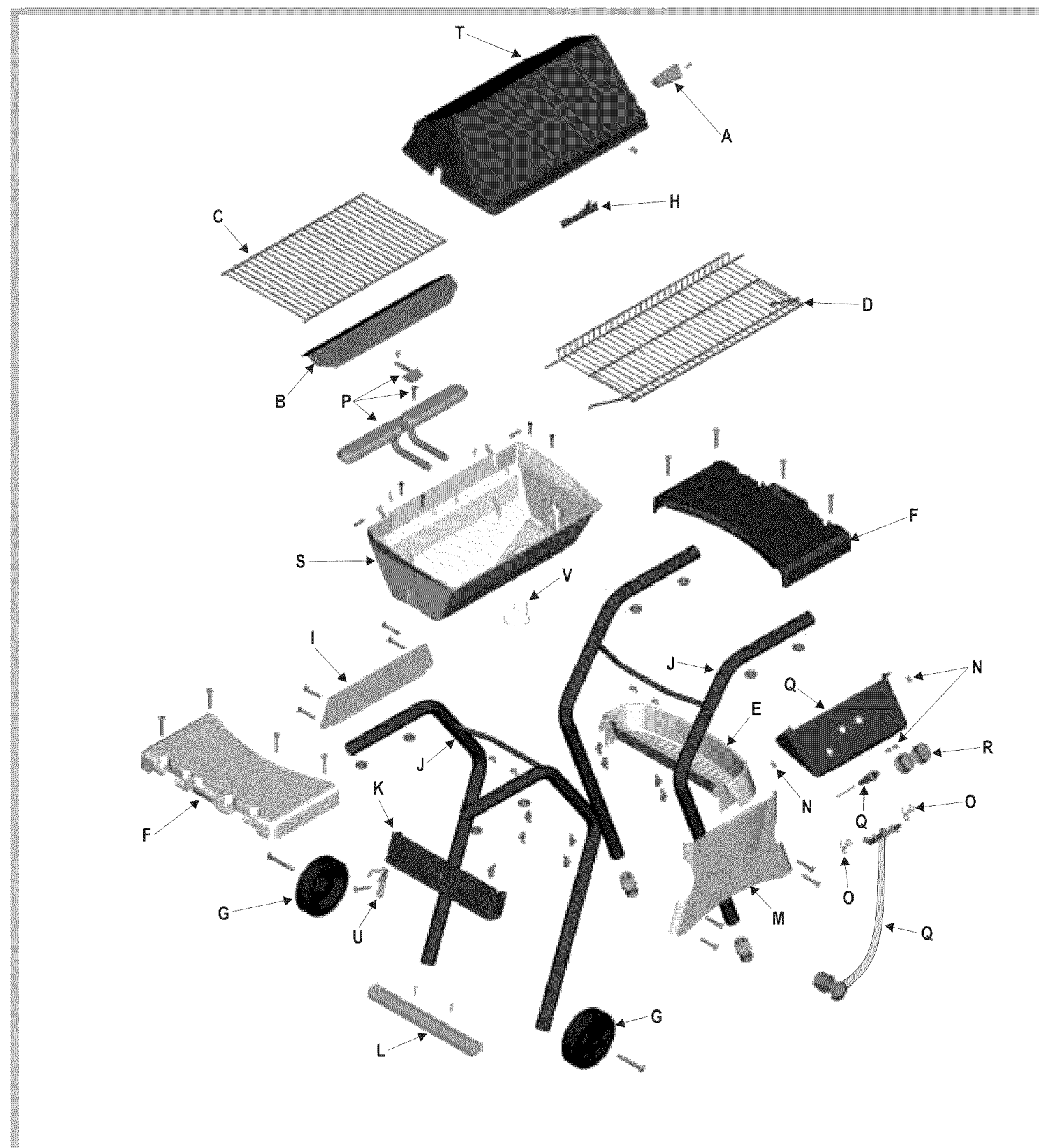
Visit us on the web at:
www.charbroil.com

Char-Broil
KEEPERS OF THE FLAME
COLUMBUS, GA

Parts List - Model 463645004

Key	Qty.	Description	Part #	Key	Qty.	Description	Part#
A	1	Handle	4154430	1	Hardware Bag, Cart	4254061	
B	1	Vaporiser Bar	4151038	2	Hardware Bag, Shelves	4254005	
C	1	Cooking Grate	4152738				
D	1	SwingAway	4152866				
E	1	Condiment Basket	4154271				
F	2	Side Shelf	4154484				
G	2	Wheel	4154569				
H	1	Logo Plate	4157147				
I	1	Back Support Brace	4500251				
J	2	Leg Assembly	4503118				
K	1	Side Support Brace	4503120				
L	1	Tank Support Bracket	4503122				
M	1	Front Panel	4503136				
N	4	#10x1/2", T-20, Self-Tap Screw	4080043				
O	1	Valve Clip	4151043				
P	1	Burner/Collector Assembly	4505081				
Q	1	Control Panel Assembly	4530180				
R	2	Control Knob	4154470				
S	1	Grill Bottom	4580163				
T	1	Grill Lid	4580594				
U	1	Tank Retainer Wire	4151018				
V	1	Grease Clip	5156607				

Optional Assembly Hardware
 We realize some customers prefer to use tools. **Optional hex nuts** have been provided for you to use.



1

Parts to assemble:
 2 Leg Assembly
 1 Front Panel
 1 Side Support Brace
 4 Carriage Bolt, 2"
 4 Plastic Toe Knob

A. Lay leg assemblies on their sides.
 B. Place front panel on legs.
 C. Secure with carriage bolts and toe knobs.
 NOTE: Leave toe knobs loose on right side.

Qty. 4
Qty. 4

NOTE: To prevent scratching, lay grill on packing material to assemble.

2

Parts to assemble:
 1 Back Support Brace
 4 Carriage Bolt, 2"
 4 Plastic Toe Knob
 2 Wheel
 1 Tank Support Bracket
 2 High Pin
 2 Leg Extender

A. Turn assembly upside down.
 B. Secure back brace and side brace to left leg and back brace to right leg with carriage bolts and toe knobs. **NOTE:** Leave toe knobs loose on right side.
 C. Insert tank support through wheels, legs and bracket. Bracket fits inside legs. Secure with high pin.
 D. Push leg extenders into right legs.

Leave toe knobs on this side loose.

Qty. 4
Qty. 2
Qty. 4
Qty. 2

3

Parts to assemble:
 1 Condiment Basket

A. Stand cart upright.
 B. Place condiment basket hooks over front panel bolts on inside of front leg. See step A.
 C. Place condiment basket hooks over back support brace bolts on outside of back leg. See step B.
 D. Fully tighten toe knobs on both legs.

Qty. 4

4

Parts to assemble:
 1 Grill Bottom Assembly
 4 Carriage Bolt, 1/2"
 4 Metal Spring Nut
 7 Control Knob

A. Make sure igniter wire is connected to igniter.
 B. Place grill bottom onto supports. Control panel overlaps front panel.
 C. Secure with carriage bolts and wing nuts.
 D. Press control knobs into valves.

Qty. 4
Qty. 4

5

Parts to assemble:
 1 Vaporiser Bar
 1 Cooking Grate

A. Place vaporiser bar onto the two inner support ridges on each end of grill bottom. Bar should rest between the outer support ridges. See next below.
 B. Place cooking grate into grill bottom.

NOTE: Ceramic briquettes are not required.

Qty. 4

6

Parts to assemble:
 1 Side Shelf
 2 Side Shelf
 8 Carriage Bolt, 2"
 8 Corner Fastener
 or Plastic T-Nut

A. Place shelves onto legs (curved edge inward).
 B. Secure with carriage bolts and corner fasteners or T-nuts.

Qty. 4
Qty. 8

7

Parts to assemble:
 1 Grill Lid
 1 Handle
 1 Machine Screw, 1/2"
 1 Metal Wing Nut
 2 Hinge Pin
 2 High Pin
 1 Logo Plate

A. Attach kit to grill bottom with hinge and high pins.
 B. Attach handle to lid with machine screw and metal wing nut.
 C. Snap logo plate onto grill lid.

NOTE: Grill lid style may vary.

Qty. 1
Qty. 2
Qty. 1
Qty. 2

8

Parts to assemble:
 1 Swingaway

A. Slide rear pivot wire of swingaway into holes in grill lid.
 B. Insert top wires into top hole of three hole pattern on side of grill bottom.

NOTE: Grill lid style may vary.

Qty. 1

9

Parts to assemble:
 1 Tank Retainer Wire
 1 Carriage Bolt, 1/2"
 1 Plastic Toe Knob

A. Attach retainer wire to left side brace with carriage bolt and toe knob. Leave loose.

Qty. 1

10

Parts to assemble:
 1 LP Gas Tank (not included)

LP tank to be sold separately. Fill and test at store before attaching to grill and regulator.

A. Center LP tank on support bracket with collar opening to front.
 B. Slide retainer over tank collar and tighten toe knob.

CAUTION

Tank collar opening must face to front of cart once tank is attached.

Failure to install tank correctly may allow gas flow to be damaged in operation, resulting in the risk of fire.

See Use & Care manual to perform the "Burner Flame Check" and for important safety instructions before using.

Qty. 1

11

Parts to assemble:
 1 Grease Chip

A. Hang grease chip beneath grill bottom.
 B. Hang an empty soap can (not included) from grease chip.

CAUTION

Failure to install soap can correctly may cause hot grease to drip from bottom of grill with risk of fire or property damage.

Rear view of grill.

Qty. 1