

## INSTALLATION INSTRUCTIONS

### Household Water Filtration System – GNWH08C

#### SAFETY PRECAUTIONS

- Check with your state and local public works department for plumbing and sanitation codes. You must follow these guidelines as you install the Household Water Filtration System. Using a qualified installer is recommended.
- Be sure the water supply conforms with the *Specifications guidelines*. If the water supply conditions are unknown, contact your municipal water company.

**⚠ WARNING:** Do not use with water that is microbiologically unsafe or of unknown quality without adequate disinfection before or after the system.

- It is highly recommended that a water shut off valve be placed directly upstream of your household filter.

#### PROPER INSTALLATION

*This Household Filtration System must be properly installed and located in accordance with the Installation Instructions before it is used.*

- **Check with your local public works department for plumbing codes. You must follow their guides as you install the Household Filtration System.**
- **Use the Household Filtration System on a potable, safe-to-drink, home COLD water supply only. The filter cartridge will not purify water or make unsafe water safe to drink. DO NOT use on HOT water (100°F. max).**
- **Protect the Household Filtration System and piping from freezing. Water freezing in the system will damage it.**
- **Your Household Filtration System will withstand up to 125 psi water pressure. If your house water supply pressure is higher than 100 psi during the day (it may reach higher levels at night), install a pressure reducing valve before the system is installed.**

- Do not install on **HOT WATER**. The temperature of the water supply to the Household Filtration System must be between the minimum of 40°F. and the maximum of 100°F. See the *Specification guidelines*.

- **Do not** install the Household Filtration System using copper solder fittings. The heat from the soldering process will damage the unit.

**⚠ WARNING:** Discard all unused parts and packaging material after installation. Small parts remaining after installation could be a choke hazard.

- **Do not** install filter in an outside location or anywhere it will be exposed to sunlight.

#### REQUIRED TOOLS FOR INSTALLATION

- 2 wrenches: 1½" and 1¼"
- Pipe cutter or hack saw
- File

#### CONTENTS INCLUDED WITH PRODUCT

- Filter housing and head
- Sediment filter
- (2) ¾" brass compression fittings with nut and ferrule
- Teflon tape
- Product literature
- Sump wrench
- Grounding clamps and wire



GNWH08C

System is Tested and Certified by NSF International against ANSI/NSF Standard 42 for Particulate Reduction Class III.

251B6021P004 8-00JR 49-50063

www.geappliances.com  
GENERAL ELECTRIC COMPANY, Appliance Park, Louisville, KY 40225

## ABOUT THE FILTER CARTRIDGE

### Specification Guidelines

Minimum–Maximum Supply Water Pressure: 20–125 pounds per square inch (psi)

Minimum–Maximum Supply Water Temperature: 40°F / 100°F

Rated Service Flow: 4 gpm

### Filter Cartridge Life

Several variables determine how long the cartridge will last in your Household Water Filtration System. These include:

- levels of sediment or other undesirable substances in your water.
- the amount of water you use.
- the filter location (filtering all or part of household water).

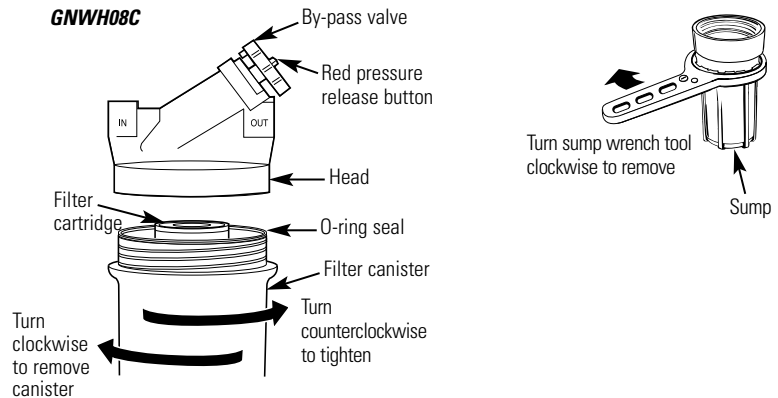
GE MODEL	FUNCTION	LIFE	CONSTRUCTION
FXUSC*	Sediment 5 Micron	3 month/16,000 gallons	Polyspun
FXWPC	Sediment 30 Micron	3 month/16,000 gallons	Pleated
FXWSC	Sediment 10 Micron	3 month/16,000 gallons	String Wound
FXWTC*	Sediment 10 Micron Chlorine	3 month/15,000 gallons	Carbon Paper

\*NSF Certification for particulate reduction applies only to the FXUSC and FXWTC when used in GNWH08C.

### Filter Cartridge Replacement

You should change your filter when the water flow is noticeably reduced or at least every three months.

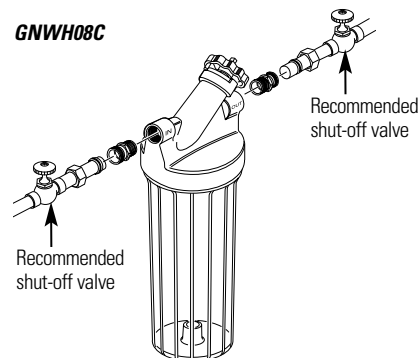
- 1 Turn off water to filter by rotating the by-pass valve to the by-pass position.
- 2 Press the red pressure release button to release pressure.
- 3 Unscrew the filter canister and discard used filter. Wash the filter canister with mild soap and water. **Do not** use harsh cleaners or hot water.
- 4 Inspect the filter canister O-ring. Make sure it is lightly lubricated and completely seated in the groove. It is recommended that you replace the O-ring if it is damaged.
- 5 Place a new filter cartridge into the canister making sure it is centered and completely seated on the bottom seal.
- 6 Reinstall the filter canister to the unit. Hand tightening is all that is required to seal the unit.
- 7 Slowly turn on water to the filter by using the by-pass valve.
- 8 Press the red pressure release button to remove trapped air.
- 9 Open any downstream faucet and allow filter system to flush for 5 minutes.



## STEP-BY-STEP INSTALLATION INSTRUCTIONS

### Installation Overview

**NOTE:** Be sure to allow a minimum space of 1½" under the filter for removing the sump, to change the cartridge.



## STEP-BY-STEP INSTALLATION INSTRUCTIONS (cont.)

### Select Location

Select a location for the filter that is:

- protected from freezing.
- not exposed to direct sunlight.

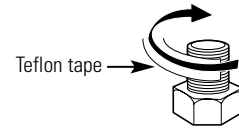
*It is recommended that a shut-off valve be placed on both sides of the filter.*

### Install Fittings

The fittings supplied with the filter are for use with  $\frac{3}{4}$ " copper tubing only. If the unit is to be installed on any other type of tubing (plastic, PVC, galvanized), separate hardware must be purchased.

Apply about 6" of Teflon tape, in a clockwise direction, to the pipe threads (course) of each adapter. **DO NOT** use joint compound on any parts.

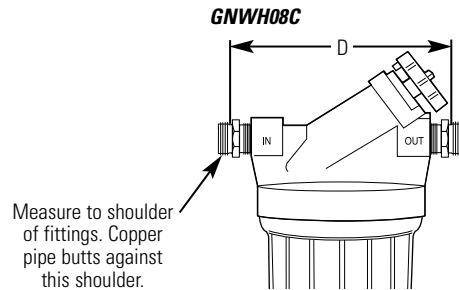
Assemble a fitting to the inlet and outlet of the head. Start each fitting by hand to make sure they don't cross thread. Use a  $\frac{1}{8}$ " wrench firmly. **DO NOT OVERTIGHTEN.** About one to two thread(s) should remain visible.



### Cut Water Line

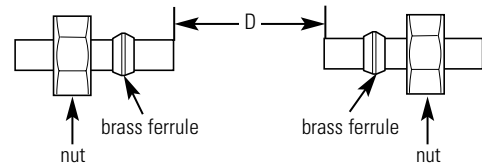
- 1 Turn off water supply and open a nearby faucet to drain water out of pipes.
- 2 Remove the nut and brass ferrule from both compression fittings and set aside. Using a tape measure or ruler, measure the distance "D" as shown.
- **NOTE:** It is recommended that the shut-off valve be placed before and after the filter as shown in the *Installation Overview* illustration.
- Select the location for the filter. Mark the distance "D" on the pipe.

- 3 Using a pipe cutter or hacksaw, cut pipe. Sand (file) cut ends of pipe to assure that they are square and smooth.



### Attach Fittings to Water Line

- 1 Slip a compression nut onto each pipe.
- 2 Next, slip the brass ferrule onto each pipe.



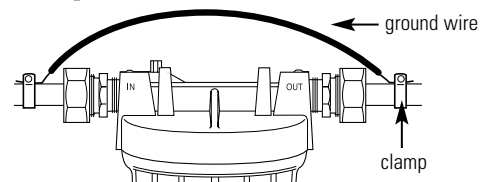
### Installing the Unit

- 1 Align filter assembly with pipe ends making certain that the **incoming** water supply is going into the filter opening marked "IN". It may be necessary to spread the pipe ends apart to install filter assembly.
- 2 Using a  $\frac{1}{8}$ " wrench to hold the adapter in place, use a  $\frac{1}{4}$ " wrench to tighten the nut. Repeat process for other fittings.
- 3 If necessary, support the water pipe on either side of the filter unit.

### Installing the Ground Wire

**IMPORTANT:** The house cold water pipe is often used to ground electrical outlets in the home. **Grounding protects you from electrical shock.** The water filter housing may have broken this ground. To restore copper, buy and install a #6 copper wire across the filter, tightly clamped at both ends as shown here.

- 1 Install clamps to copper pipe on both sides of the unit (as shown).
- 2 Securely attach each end of the grounding wire to the pipe with the clamps.

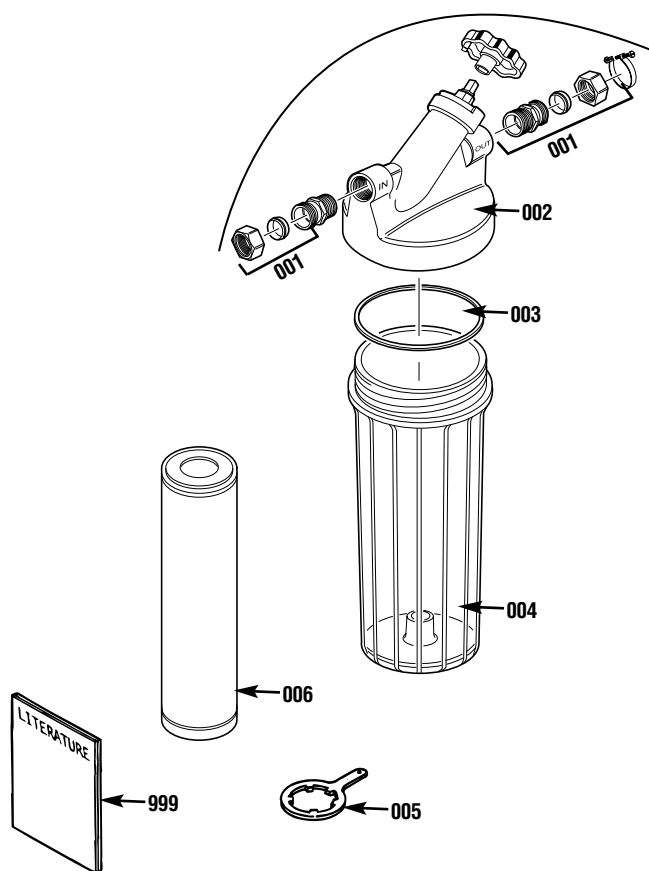


### Final Check

- 1 Slowly turn on water supply.
- 2 Check entire system for leaks.

- 3 If leaking, shut off water pressure and tighten or reseal fittings.
- 4 Open any downstream faucet and allow filter system to flush for 5 minutes.

## PARTS LIST



Ref. No.	Part No.	Part Description	GNWH08C
001	WS35X10023	Installation Kit	1
002	WS19X10013	Head Assembly with Valve Asm.	1
003	WS03X10038	O-Ring	1
004	WS30X10004	Sump—Clear	1
005	WX5X140	Sump Wrench	1
006	FXUSC	Filter Element—Poly Spun	1
	FXWPC	Filter Element—Pleated	—
	FXWSC	Filter Element—String	—
	FXWTC	Filter Element—Carbon Paper	—
999	49-50063	PM Installation Instructions	1

## GE HOUSEHOLD WATER FILTRATION SYSTEM WARRANTY



All warranty service provided by our SmartWater™ Authorized Servicer Network.  
For service, call 800-GE-CARES.

### For The Period Of: GE Will Replace:

**One Year** **Any part** of the Household Water Filtration System (excluding filters) which fails due to a defect in materials or workmanship. During this **limited one-year warranty**, GE will also provide, **free of charge**, all labor (does not include service trip to home) to replace the defective part.  
From the date of the original purchase

### What GE Will Not Cover:

- Service trips to your home to teach you how to use the product.
- Improper installation.
- Failure of the product if it is abused, misused, or used for other than the intended purpose or used commercially.
- Use of this product where water is microbiologically unsafe or of unknown quality, without adequate disinfection before or after the system. Systems certified for cyst reduction may be used on disinfected water that may contain filterable cysts.
- Filter cartridges.
- Damage to the product caused by accident, fire, floods or acts of God.
- Incidental or consequential damage caused by possible defects with this appliance.

*This warranty is extended to the original purchaser and any succeeding owner for products purchased for home use within the USA. In Alaska, the warranty excludes the cost of shipping or service calls to your home.*

*Some states do not allow the exclusion or limitation of incidental or consequential damages. This warranty gives you specific legal rights, and you may also have other rights which vary from state to state. To know what your legal rights are, consult your local or state consumer affairs office or your state's Attorney General.*