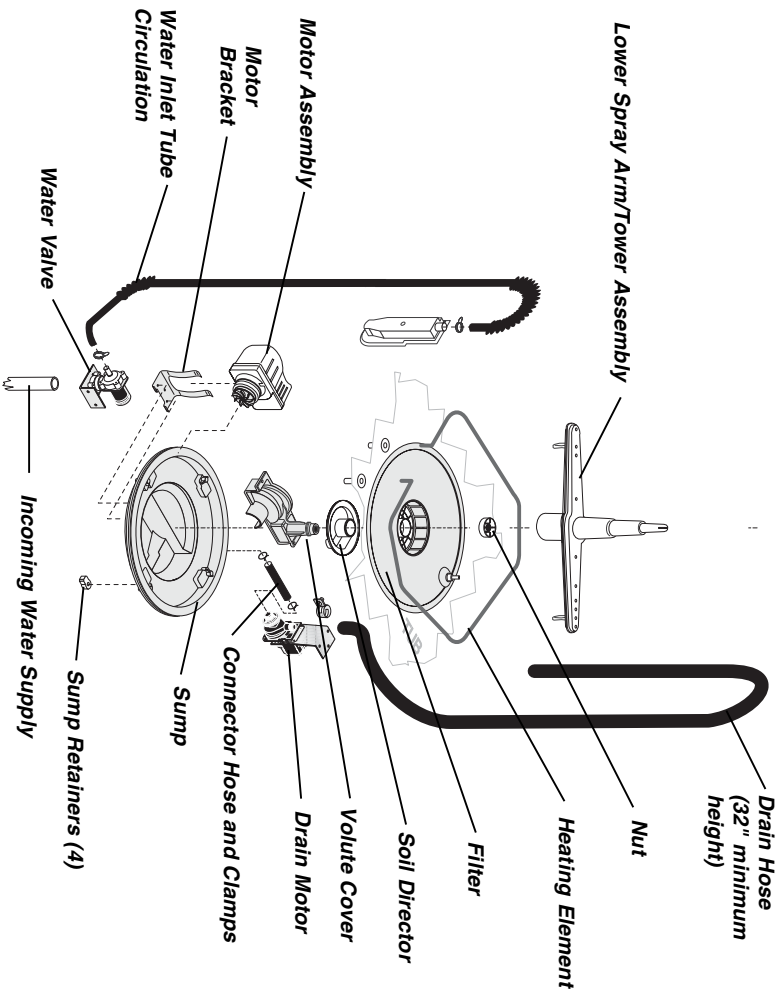


Exploded View of Wash System



Pump Assembly
The pump assembly is driven by a synchronous motor. Rotation is in the counterclockwise direction at 3600 RPM. The motor drives a pump which supplies 100 percent filtered water at a rate to approximately 12 GPM.

Draining is accomplished by using a small separate synchronous drain pump mounted to the side of the sump. The drain pump is connected to the main pump by a small rubber hose. The drain check valve is located at the discharge end of the drain pump. The drain hose is attached by a worm gear clamp to the discharge end of the drain pump.

900 Watt Heater

Refer to the cycle chart on the reverse side to determine when the heater is on during the wash cycle.

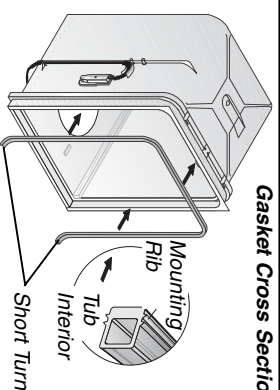
The drain hose must have a loop at a **minimum height of 32 inches** in order to insure proper drainage.

The main pump can easily be removed by disconnecting the drain pump connector hose and the wiring harness connections made at the circulation motor and rotating the four sump retainers toward the middle of the sump.

Voltage checks of the heater should be made with the timer set in the main wash.

Tub and Door Seal

The door seal is pressed into the tub channel for an interference fit. Center the gasket (marked on back) at the tub top center and press in place without stretching or bunching. The gasket takes a short turn at the bottom of the tub channel before ending at the channel end wall.



Product Specifications

Electrical	Rating	120 Volts, 60Hz
	Separate Circuit ...	15 amp min.- 20 amp max.
	Motor (Amps)	1.1
	Heater Wattage	900
	Total Amps (load rated)	10.0

Water Supply

Minimum incoming water temperature	120°F (49°C)
Pressure (PSI) min./max.	20/120
Connection (NPT)	3/8"
Consumption (Normal Cycle)	7.2 gal., 27.3 liters

Trouble Shooting Tips

⚠️WARNING

Electric Shock Hazard

Disconnect electrical power at the fuse box or circuit breaker box before adjusting or replacing components. Failure to follow this warning could result in death or serious injury.

Check the list below each symptom. Repair or replace defective components as encountered.

Symptom. . . Dishwasher will not operate when turned on (wait at least 90 seconds).

1. Fuse (blown or tripped).
2. 120 VAC supply wiring connection faulty.
3. Timer (contacts open or defective)
4. Motor (inoperative).
5. Door switch (open contacts).
6. Door latch not making contact with door switch.
7. Selector switch (open contacts).

Symptom. . . Motor hums but will not start or run.

1. Motor (bad bearings or locked rotor).
2. Motor stuck due to prolonged non-use.

Symptom. . . Motor trips out on internal thermal overload protector.

1. Improper voltage.
2. Motor shaft binding.
3. Motor windings shorted.
4. Glass or foreign items in pump.

Symptom. . . Dishwasher runs but will not heat.

1. Heater element (open).
2. Timer defective.
3. Wiring or terminal defective.

Symptom. . . Dishwasher will not pump out.

1. Drain restricted.
2. Timer contact defective.
3. Defective drain pump.
4. Air lock in drain hose.
5. Blocked impeller.
6. Open windings.

Symptom. . . Dishwasher will not fill with water.

1. Water supply turned off.
2. Defective water inlet fill valve.
3. Check fill valve screen for obstructions.
4. Defective float switch.
5. Timer contact defective.
6. Wiring defective.
7. Float stuck in "UP" position.

Symptom. . . Timer does not advance.

1. Timer motor (stalled or open.)
2. Check timer for power to timer motor.
3. Timer shaft binding to or knob interference with escutcheon.

Symptom. . . Dishwasher water siphons out.

1. Drain hose (high) loop too low--must be a minimum height of 32 inches.
2. Drain line connected to a floor drain not vented. (Install air gap at counter top.)

SERVICE DATA SHEET

P/N: 154473301

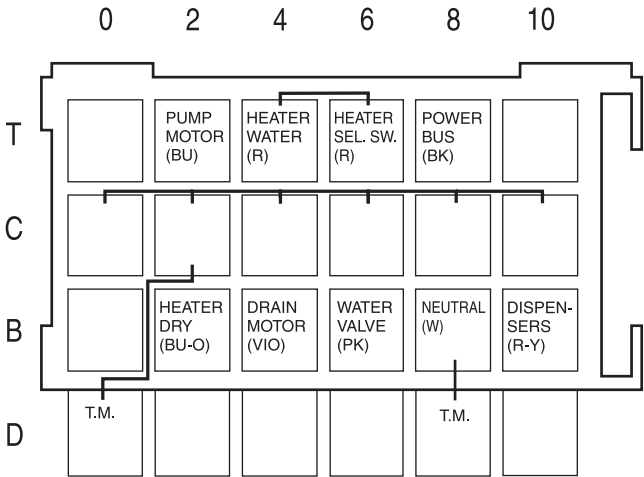
**Models: 587.14000102, 587.14001993
587.14002993, 587.14003100,
587.14008003, 587.14009102**

This information is intended for use by persons having electrical and mechanical training and a level of knowledge of these subjects generally considered acceptable in the appliance repair trade. The manufacturer or seller cannot be responsible, nor assume any liability, for injury or damage of any kind arising from the use of this Service Data Sheet.

Color Code

BK..... Black R.....Red
 BU..... Blue VIO.....Violet
 BU-O..... Blue/Orange W.....White
 PK.....Pink R-Y.....Red/Yellow

Timer Block



Cycle Chart

	OFF	DRY	NORMAL WASH	HEAVY WASH	OFF
BU 2T WASH MOTOR	■	■	■	■	■
VIO 4B DRAIN MOTOR					■
PK 6B FILL VALVE				■	
R 4T HEATER WASH			■	■	■
BU-O 2B HEATER DRY					■
R-Y 10B DISPENSER					■
O 2C TIMER MOTOR					■
BK 8T PWR BUSS	■	■	■	■	■
	102	100			
	99	100			
	97	200			
	94	200			
	91	200			
	87	200			
	84	100			
	82	200			
	79	200			
	76	100			
	74	2			
	72	98			
	71	100			
	69	100			
	67	88			
	66	92			
	64	8			
	64	3			
	64	97			
	62	100			
	61	100			
	59	100			
	57	100			
	56	88			
	54	92			
	53	8			
	53	3			
	53	97			
	51	300			
	46	300			
	41	300			
	36	100			
	34	88			
	33	92			
	31	8			
	31	3			
	30	97			
	28	100			
	26	100			
	25	88			
	23	92			
	22	8			
	21	3			
	21	97			
	20	100			
	18	100			
	16	88			
	15	92			
	13	8			
	12	100			
	10	100			
	8	88			
	7	92			
	7	8			
	5	100			
	3	100			
	3	88			
	2	95			

Wiring Diagram

